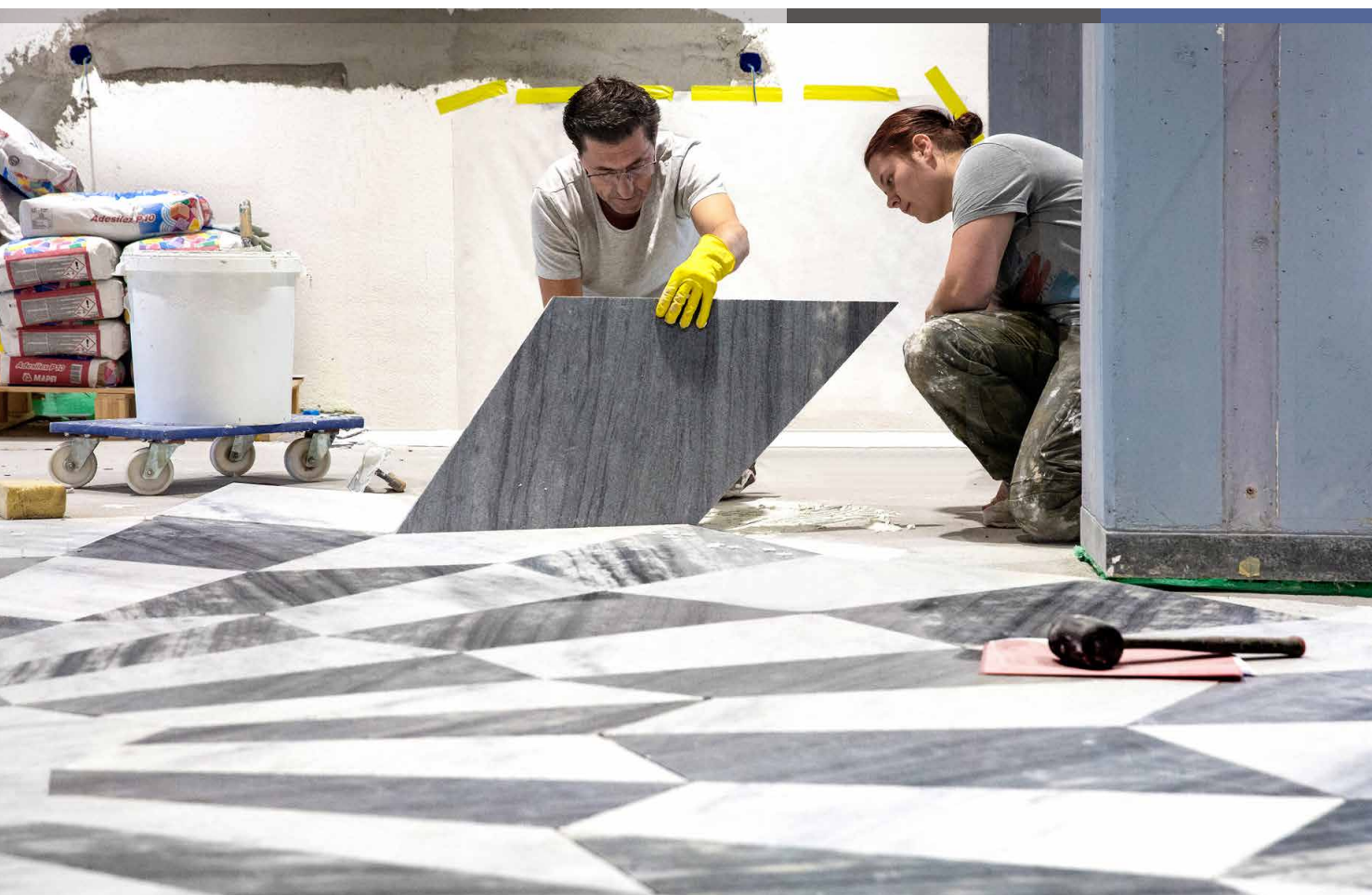


2024 Annual Report



2024 Annual Report

132nd Report of the Board of Directors to the Cantonal Parliament



Year founded

1892

Shareholders' equity

2.6

billion Swiss francs

Headcount

458.4

full-time positions as of
31/12/2023 (according to the
directive of the Swiss Financial
Market Supervisory Authority -
FINMA).

Network

27

BCF, headquartered in Fribourg,
has 27 branches including one
online.

Banque Cantonale de Fribourg (BCF) at a glance

State Guarantee

All financial commitments are guaranteed by the Canton of Fribourg.

Collaboration

- Swiss Bankers Association (SBA)
- Association of Swiss Cantonal Banks (ASBC)
- Central Mortgage-Bond Institution of Swiss Cantonal Banks
- SIX Group AG
- BCF Third Pillar - Savings 3 Foundation
- BCF Vested Benefits Foundation
- Capital Risque Fribourg SA
- Viseca Payment Services AG

Legal Status

Non-governmental legal entity under public law

Objectives

- Contribute to the economic development of the Canton
- Provide for the financial needs of the people of Fribourg and offer secure investment opportunities for their savings and capital
- Furnish financial resources to the Canton

Address

BCF, Bd de Pérolles 1, Post Office Box, 1701 Fribourg
Phone: 0848 223 223
www.bcf.ch

2024–2014 Balance Sheet

(in thousand CHF)

| | 2024 (ARB) | 2014 (FRG) |
|--|------------|------------|
| Total assets | 28,700,190 | 18,938,227 |
| Loans to customers | 23,510,029 | 16,103,280 |
| Customer deposits | 16,983,336 | 11,832,353 |
| Shareholders' equity (after appropriation) | 2,627,821 | 1,582,703 |

2024–2014 Income Statement

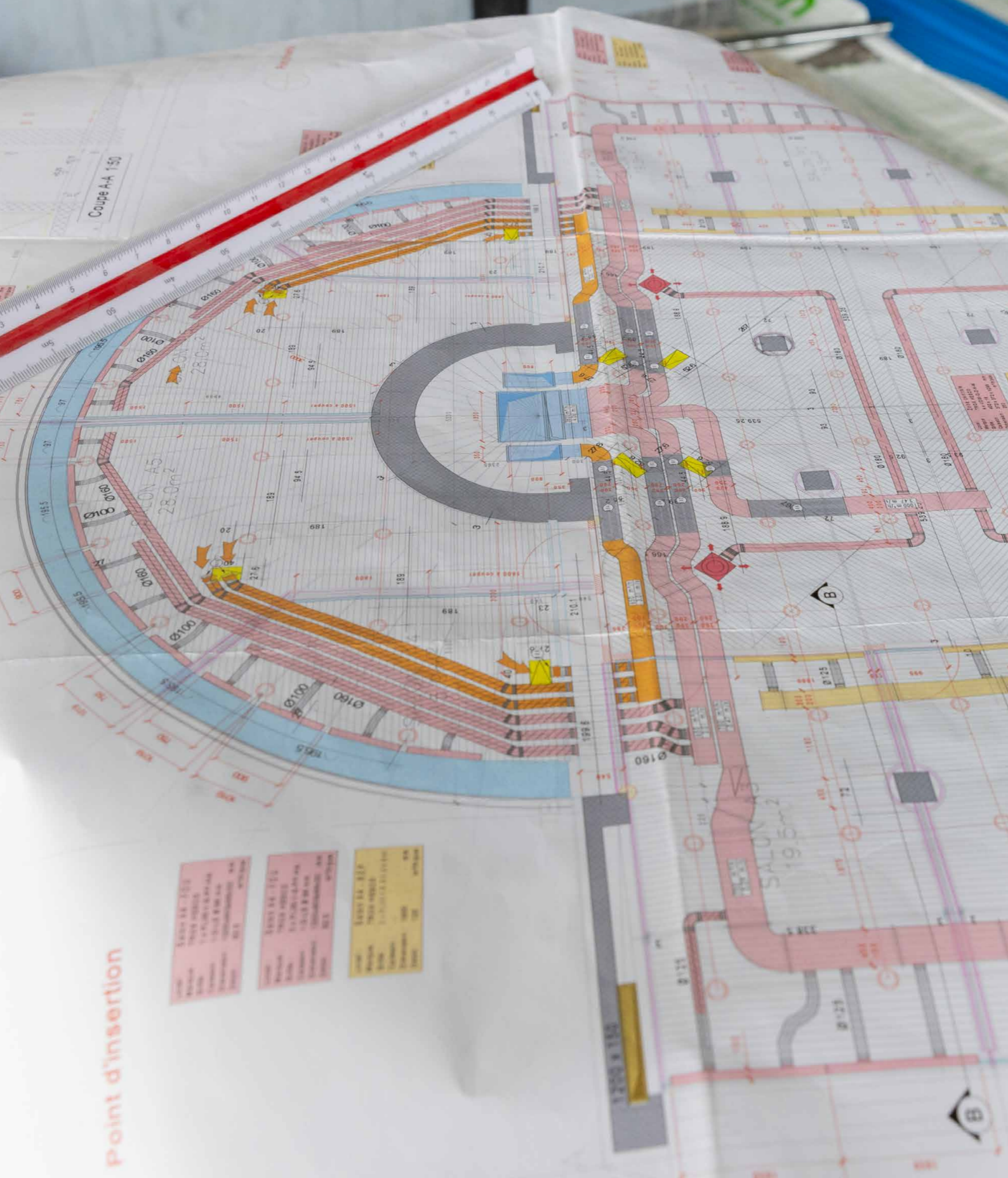
(in thousand CHF)

| | 2024 (ARB) | 2014 (FRG) |
|---|------------|------------|
| Total income | 394,749 | 273,049 |
| Total expenses | 131,581 | 88,025 |
| Operating profit | 236,542 | 185,024 |
| Net profit for the year | 163,675 | 120,172 |
| Payments to the Canton, municipalities and parishes | 107,867 | 61,800 |

Note:

ARB = Accounting Requirements for Banks

FRG = Financial Reporting Guidelines



Contents

| | |
|--|----|
| Banque Cantonale de Fribourg at a glance | 2 |
| Message from the Chairmen | 7 |
| Our Successes at BCF | 9 |
| Corporate Governance | 10 |
| Organisation as of 01/01/2025 | 22 |
| BCF on the Path to Sustainability | 25 |
| Financial Year 2024 | 28 |
| BCF's Commitments | 34 |
| The BCF Foundation | 37 |
| 2025 Perspectives | 39 |
| 2025 Network | 41 |
| Financial Report 2024 | 43 |
| Appendices | 88 |



Daniel Wenger, Chairman of the Executive Board, and Alex Geissbühler, Chairman of the Board of Directors

A forward-thinking bank in full development

In 2024, Banque Cantonale de Fribourg recorded excellent results, with sustained growth in the key sectors of wealth management, mortgage business and business loans. This qualitative growth is a testament to the lasting trust of our customers, despite an environment marked by inflation and the monetary policies of central banks, which have impacted interest rates throughout the year.

Our solid financial performance not only enables us to support public authorities, but also to invest in the future of our institution. With this in mind, we have continued to strengthen our teams to guarantee optimal service quality. At the same time, we have accelerated our digital transformation and modernised our infrastructure in order to anticipate the challenges of tomorrow.

In 2024, we completed a major project at BCF headquarters. Under the direction of architect Mario Botta, the first floor of this iconic building has been completely renovated, as you will discover in the pages of this report. Thanks to the expertise of many different trades, the new spaces combine modernity and functionality, offering an optimised environment for our customers and our employees. Our branches are also benefiting from this transformation. Last year, the Domdidier branch was given a makeover, while the Guin and Bulle branches underwent complete renovations to further improve the customer experience.

To ensure a quality service and support tailored to the needs of our customers, we continually invest in the training of our employees. In particular, we have intensified our efforts to develop skills in environmental, social and governance (ESG) issues, in order to respond appropriately to the growing challenges in this area.

In 2024, BCF's Board of Directors, on the proposal of the Executive Board, defined the strategic orientations for the 2025-2027 cycle. This exercise allows us to consolidate our vision and anticipate future developments, while remaining true to our mission: to place our clients at the centre of our actions and to support them with expertise and proximity.

Committed to the values that define BCF, we are proud to be a trusted partner for the residents and businesses of the Canton of Fribourg, offering them reliable support and sound advice.

On behalf of the Board of Directors and the Executive Board, we would like to express our sincere gratitude to all our customers for their loyalty. We would also like to extend our warmest thanks to all our employees for their professionalism and commitment.



Alex Geissbühler
Chairman of the
Board of Directors



Daniel Wenger
Chairman of the
Executive Board



Daniel Wenger, Chairman of the Executive Board, Mario Botta, architect, and Patrick Neuhaus, Manager Real Estate and Logistics

Our successes at BCF



bcf.ch
2.8 million
 visits
4.2 million
 seen pages
6,192
 online orders



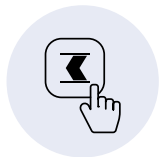
More than
9,500
 new customers



548
 employees
48 higher education
 courses including
12 certifications



107.9 million CHF
 payments
 to the Canton,
 municipalities
 and parishes



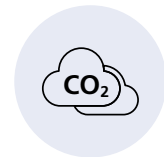
4.4 million
 e-banking accesses
12.2 million
 mobile banking
 accesses



13.4 million CHF
 in work and
 orders to SMEs



35.3% CIR
 Cost/Income Ratio*
 *Cost/revenue ratio
 before depreciation
 and amortisation



Achieved
 Fribourg "Carbon Fri"
 certification



53,700
 users
8.8 million
 transactions
425 million CHF
 in transactions



Free
 basic services



175
 contests organised
518
 prizes won



Achieved
 Fair-On-Pay Advanced
 Certificate

Corporate Governance

Clearly defined powers and responsibilities, combined with transparent interaction between the Management and the supervisory bodies at all levels of the company, are the pillars of effective corporate governance at BCF.

The Swiss Code of Best Practice for Corporate Governance is aimed at Swiss public companies. It contains rules of conduct and recommendations. Each company is free to develop its own organisational principles. In this respect BCF has chosen to adopt certain of its recommendations.

Structure

Banque Cantonale de Fribourg is a legal entity under public law, separate from the government, and does not constitute a group within the meaning of the accounting standards applicable to the Bank. The Bank's structure and organisation are presented in the organisational chart on pages 22-23. BCF has no controlling interests, and is therefore not required to

prepare consolidated financial statements. The participations are listed in the notes to the annual financial statements on page 56 of this Annual Report.

Owner

The Canton of Fribourg owns 100% of BCF.

Cross-shareholdings

BCF does not have any cross-shareholdings.

Capital structure

The endowment capital of Banque Cantonale de Fribourg amounted to CHF 70 million as of 31 December 2024.

Over the past few years, equity (before profit distribution) has developed as follows, based on the accounting rules in force:

| Values in million CHF after appropriation of profit | 2024 | 2023 | 2022 | 2021 |
|---|-------|-------|-------|-------|
| Endowment capital | 70 | 70 | 70 | 70 |
| Reserve funds | 2,558 | 2,429 | 2,290 | 2,181 |
| Total shareholders' equity | 2,628 | 2,499 | 2,360 | 2,251 |

Governance Bodies

Board of Directors

Election and term of office

Under Article 20, paragraphs 1, 4 and 5 of the Law establishing the Banque Cantonale de Fribourg (BCF Law), the Board of Directors (BoD) is composed of seven members. Three members are appointed by the Cantonal Parliament, three by the Cantonal Council and one by the BoD itself. The members appointed by the Cantonal Council and the Cantonal Parliament are chosen on the proposal of a selection committee governed by Articles 27 and 28 of the BCF Law.

This committee, responsible for proposing candidates for the position of member of the BoD to the Cantonal Parliament and the Cantonal Council, is composed of seven members: four from the Cantonal Parliament, two from the BoD, including the Chairman of the Board of Directors, and one member from the Cantonal Council. The Chairman of our BoD chairs the selection committee.

Members of the BoD are appointed for a period not exceeding four years. They may be re-appointed, but their term of office may not exceed twelve years. The term of office of the Chairman is limited to total of sixteen years if he or she has served as a Board member for at least the first four years of his or her term.

Duties and powers

The powers of the BoD are set out in Article 25 of the BCF Law. The BoD is responsible for the overall management and supervision of the Bank. It decides on the general principles of the establishment's policy.

In particular, the BoD has the following powers:

- exercises overall supervision over the persons entrusted with managing the Bank, in particular with respect to compliance with the law, regulatory provisions, the articles of association and regulations;
- adopts general regulations and determines internal regulations;
- appoints the Chairman of the Executive Board, the employees at all levels requiring registration in the Commercial Register, the Head of Internal Audit and the auditors; determines their initial salary and may dismiss them. It also appoints the members of the Executive Board;

- approves the general organisation of the Bank, drawn up by the Executive Board;
- decides on the opening or closing of branches;
- determines the salary policy and compensation of the Bank's governing bodies;
- grants powers of attorney to plead matters within its competence and confers powers to deal with specific matters;
- appoints the persons whose signatures may commit the Bank with respect to third parties;
- decides on the purchase and sale of real property for the Bank's use, as well as the maintenance and renovation of real estate exceeding the amount fixed by the General Regulations;
- authorises the Bank to become a member of associations of the banking sector or join Swiss or foreign companies or banks created within the framework of the cantonal banks or similar organisations;;
- decides on the acquisition of holdings in public or private companies;
- adopts the general budget and approves the annual financial statements and the Annual Report;
- regularly reviews any loans granted by the Executive Board, the reports of the external auditors and internal audit, and the quarterly financial statements presented by the Chairman of the Executive Board;
- appoints the external auditors within the meaning of the Federal Law on Banks and Savings Banks (Banking Law);
- determines authority levels with respect to credit;
- determines the salaries of the Chairman and members of the Executive Board and the Head of Internal Audit within the guidelines of the salary policy. The Board may delegate this task to a committee in accordance with Article 26, paragraph 2.

Internal organisation

The Board of Directors is convened by the Chairman when circumstances so require, normally once a month, but at least eight times a year. It can make decisions if at least four members are present at the meeting.

Committees of the Board of Directors

The Board of Directors meets both in plenary sessions and in special committees organized in accordance with Article 26, paragraph 2, of the BCF Law.

Audit and Risk Committee

Composition and term of office

The Audit and Risk Committee is composed of at least three members, in accordance with Article 3.8.2 of the BCF General Regulations. They are elected for a term of four years. The members of the committee may be re-elected, but their maximum term of office may not exceed twelve years. The committee is composed of Yves Riedo (chairman), Urs Gauch (vice-chairman), Thomas Bachmann (member) and Paul Such (member).

Activities

The committee's activities are governed by FINMA circulars and are defined in the regulations of the Audit and Risk Committee.

Compensation and Nomination Committee

Composition and term of office

The Compensation and Nomination Committee consists of three members and one deputy member. They are elected for a term of four years. The members of the committee may be re-elected, but their maximum term of office may not exceed twelve years. The committee consists of Alex Geissbühler (chairman), Dominique Jordan Perrin (member), Paul Such (member) and Yves Riedo (deputy member).

Activities

The Compensation and Nomination Committee is responsible for reviewing the Bank's compensation policy and determining the compensation of the Executive Board and the Head of Internal Audit. If necessary, it reviews and recommends the appointment of a new member of the Executive Board.

Distribution of powers

The General Regulations define how the executive bodies are organised, the scope of their responsibilities and authority, and the principles of the BCF's business activity as a bank. In accord-

ance with the provisions of the Banking Act, responsibility for operational management is delegated to the Management team.

Information and control instruments

BCF has a well-developed and standardised management information system (MIS) that enables the Board of Directors to fulfil their supervisory duties and check the powers delegated to the Management team. Each month, the Board of Directors receives a summary of the financial statements comparing the period's results with the budget and the previous year, as well as reports on risk. It then compares the current situation with the corresponding limits. BCF also has an internal control system (ICS) designed to ensure that the Bank is operating properly. The systems and processes in place keep the Board of Directors periodically informed of relevant facts, events and developments.

At Board of Directors' meetings, the CEO and other members of the Management team report on the operations of the business in their departments. The Chairman of the Board will immediately inform the Board of Directors in the case of extraordinary events.

Risk Management and Compliance

The BCF has independent Risk Management and Compliance functions that report directly to the Audit and Risk Committee.

The Board of Directors and the Audit and Risk Committee are regularly informed about the functioning and adequacy of the internal control system as well as the strict compliance with regulatory provisions. In addition, they take note of the annual activity report of the risk and compliance functions.

In addition, in the event of irregularities or behavior contrary to the law, FINMA circulars, or the bank's regulations and directives, the compliance function can be contacted directly by all employees, at any time and in complete discretion, via an anonymous whistleblowing platform.

Internal Audit

Composition as of 01/01/2025

Fabien Emery, Head of Internal Audit
 Julien Mardon, Senior Internal Auditor
 Constantin Anatrà and Lionel Carron, Internal Auditors

Activities

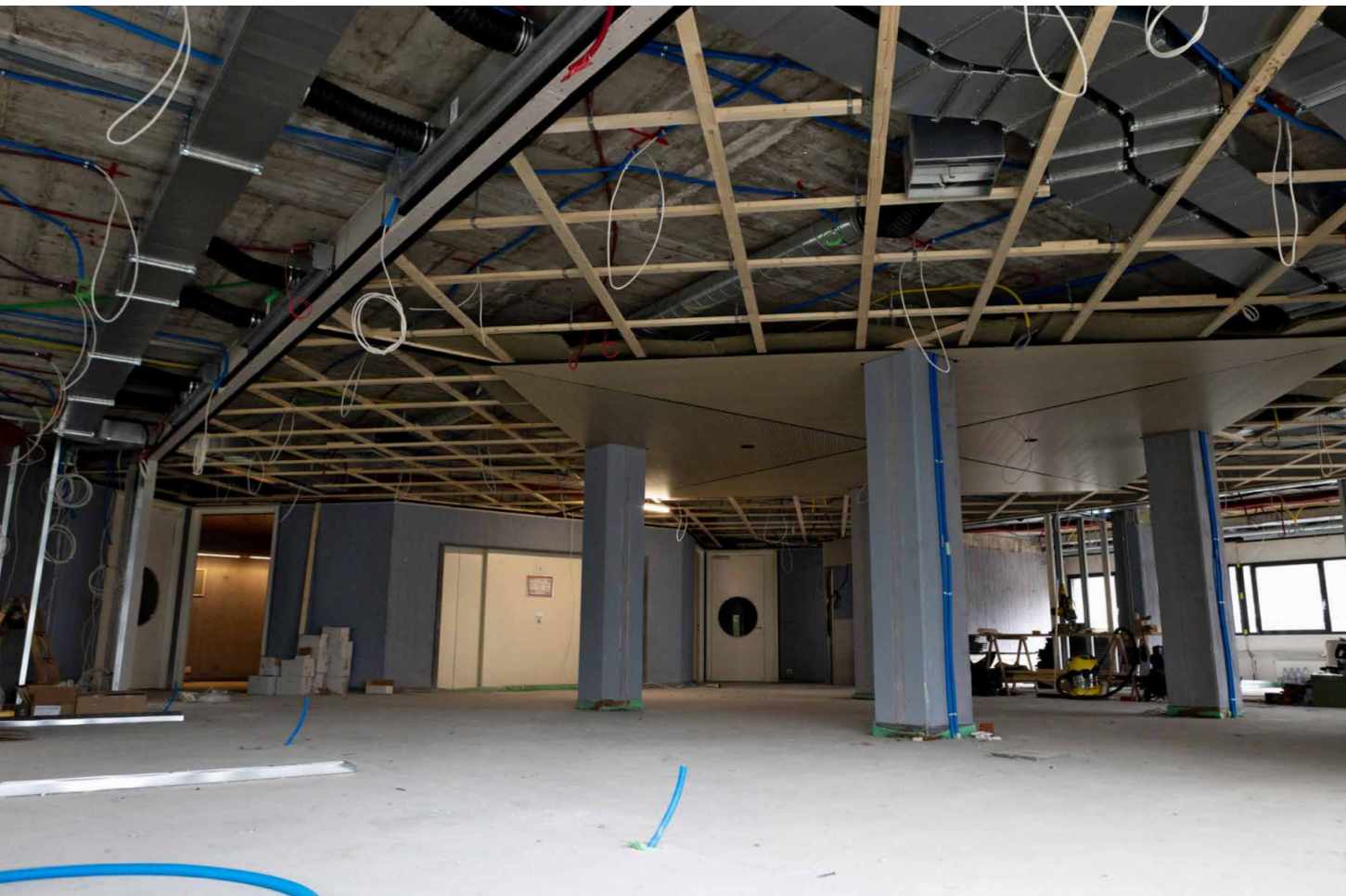
The activities of the Board of Directors and in particular the Audit and Risk Committee are supported by the independent Internal Audit function and by the external auditor. Internal Audit reports to the Board of Directors. Internal Audit and the external auditing firm maintain an ongoing dialogue on risk assessment and the risk situation. Internal Audit and the external auditing firm each perform an independent risk analysis.

The Audit and Risk Committee adopts Internal Audit's annual plan. The auditing services of Internal Audit and of the external auditing firm are coordinated with regard to their respective tasks. The Audit and Risk Committee monitors the activities of Internal Audit. A separate regulation defines Internal Audit's working method. The results of Internal Audit's controls are discussed at every Audit Committee meeting. In addition, Internal Audit prepares annual and semi-annual activity reports for the Board of Directors.

External auditors

Ernst & Young SA, Lancy
 Appointed by the Board of Directors on 31/10/2017.

The external auditing firm prepares its overall report and that of the financial auditor (in accordance with Article 728b, paragraph 1 of the Swiss Code of Obligations) as well as the report on the basic prudential audit. The overall report covers the financial year and is submitted to the Board of Directors. The report on the prudential audit covers the calendar year and is submitted to the Swiss Financial Market Supervisory Authority (FINMA), with a copy to the Board of Directors. Both reports are discussed by the Audit and Risk Committee of the Board of Directors in the presence of the external auditing firm.



Board of Directors as of 31/12/2024



Standing from left to right: Jean-Pierre Siggen, Thomas Bachmann, Alex Geissbühler, Yves Riedo
Seated from left to right: Urs Peter Gauch, Dominique Jordan Perrin, Paul Such

Alex Geissbühler

Born 12/11/1964, Swiss.

Chairman of the Board of Directors since 1 June 2022, term expires on 31 May 2025. Vice-chairman of the Board of Directors from 1 June 2017 until 31 May 2022.

Dominique Jordan Perrin

Born 18/07/1962, Swiss.

Member of the Board of Directors since 1 January 2017, term expires on 31 December 2028.

Yves Riedo

Born 22/03/1968, Swiss.

Member of the Board of Directors since 1 October 2015, term expires on 31 May 2027.

Urs Peter Gauch

Born 18/09/1960, Swiss.

Vice-chairman of the Board of Directors since 1 June 2022, term expires on 31 May 2026.

Thomas Bachmann

Born 09/05/1969, Swiss.

Member of the Board of Directors since 1 January 2017, term expires on 31 December 2028.

Paul Such

Born 22/09/1978, Swiss and French.

Member of the Board of Directors since 1 January 2017, term expires on 31 December 2028.

Jean-Pierre Siggen

Born 01/06/1962, Swiss.

Member of the Board of Directors since 1 June 2022, term expires on 31 May 2026.

Governance Bodies

Executive Board

Responsibilities and organisation

According to the General Regulations in compliance with the provisions of the Banking Law, the Executive Board is responsible as a collective body for the overall management of BCF's business. The Executive Board consists of the CEO and five other members, who report to the CEO.

BCF has five divisions and has structured both front office units uniformly around both the Corporate Clients and Private Clients segments. These two units are supplemented by the Products and Services, Finance, and Legal, Risk and Compliance divisions.

Over the past 12 months, BCF has continued to develop its business models.

Ms Anne Maillard has decided to leave the Bank in December 2024 to take up a new position in another bank. The recruitment process for her replacement is under way. Mr Daniel Wenger is acting as interim manager.

The powers of the Executive Board are defined in Article 33 of the BCF Law.

In particular, the Executive Board has the following responsibilities:

- is responsible for the proper functioning and development of the Bank and for maintaining unity in managing the Bank's affairs;
- issues advance warning on matters to be submitted to the Board of Directors;
- sets the interest rates;
- hires the Bank's employees and determines their salaries within the guidelines of the salary policy defined by the Board of Directors; it may also dismiss them;
- decides on the purchase and sale of real property mortgaged to the Bank in the event of a compulsory sale.

The tasks of the Executive Board are distributed among the members by the Chairman. As a rule, the Executive Board meets once a week.

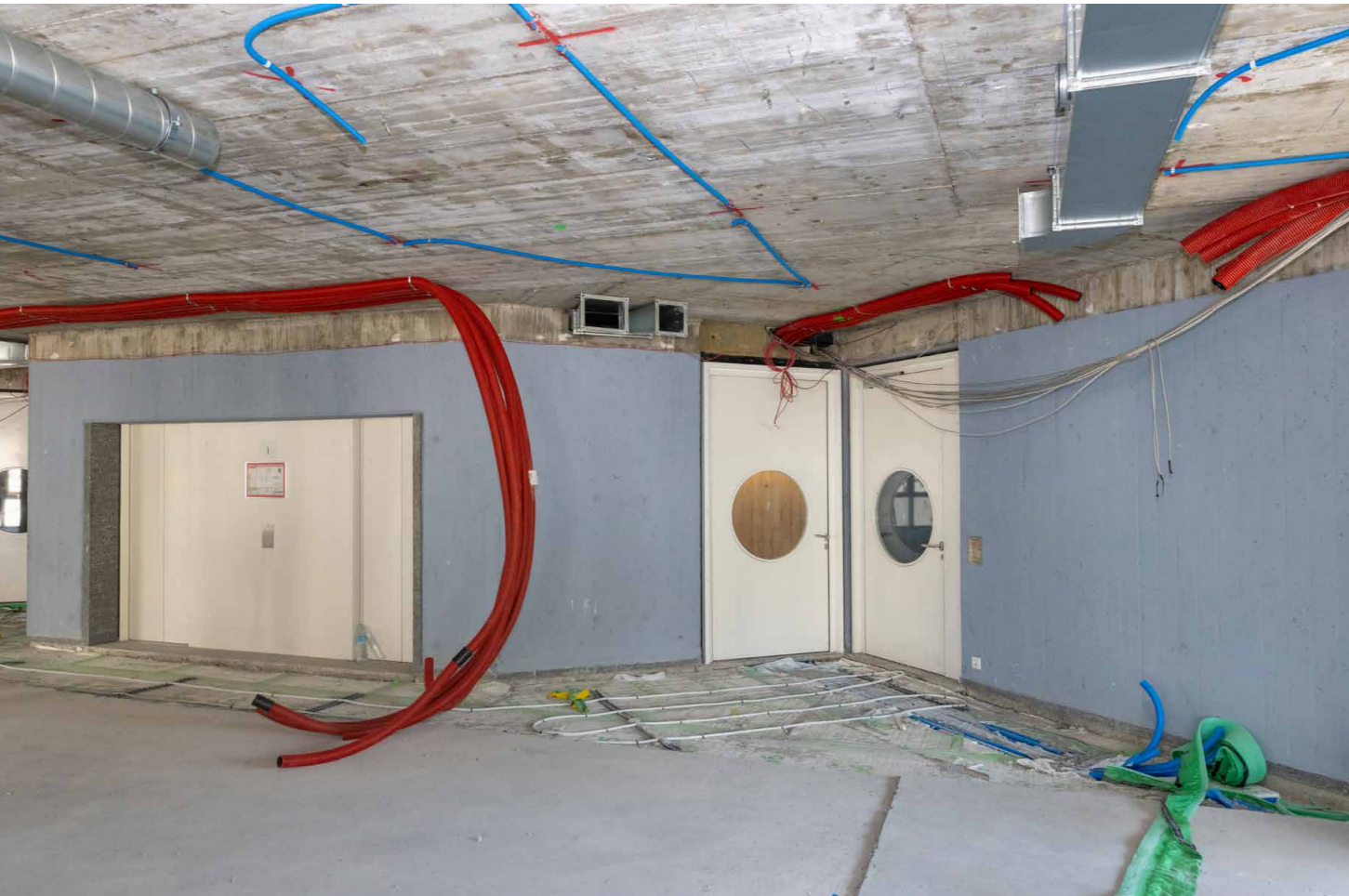
Rules on authorised activities

Acceptance of any other officer position (in the highest management or administrative body of a legal entity, associations, charitable foundations, family foundations and employee benefit foundations, etc.) is always subject to approval by the Board of Directors.

Management contracts

There are no management contracts between the Bank and external companies.





Executive Board as of 01/01/2025



Standing from left to right: Laurent Wicky, Luc Jacquat, Christophe Mettler
Seated from left to right: Cédric Yerly, Daniel Wenger

Daniel Wenger

Born 01/12/1966, Swiss.

Chairman of the Executive Board since 1 January 2021.

Christophe Mettler

Born 27/02/1967, Swiss.

Member of the Executive Board since 1 April 2021.

Luc Jacquat

Born 25/05/1964, Swiss.

Member of the Executive Board since 1 January 2023.

Cédric Yerly

Born 09/10/1975, Swiss.

Member of the Executive Board since 1 January 2017.

Laurent Wicky

Born 16/12/1970, Swiss.

Member of the Executive Board since 1 March 2023.

Principles of the Compensation Policy

Compensation system

The BCF compensation policy applies to all employees of the Bank. It describes the principles, objectives and process for determining compensation. For BCF, compensation is an important component in attracting, motivating and retaining qualified employees with the necessary knowledge and experience.

Principles

Continuity and equal treatment are extremely important aspects of BCF's compensation policy. Salary levels and hiring conditions are regularly compared with trends in the labour market and with cantonal banks of comparable size. The salary system is designed to exclude any gender discrimination. To this end, BCF regularly conducts equal pay analyses. The study conducted in 2024 showed that we at the Bank abide by the principle of equal pay for men and women. These analyses were verified by the Société Générale de Surveillance (SGS) and were confirmed when the Bank was issued the "Fair-ON-Pay Advanced" label.

Compensation components

Compensation consists of a base salary ("fixed salary"), performance bonus ("variable bonus"), pension contributions and family allowances.

Compensation depends on the employee's function. Consequently, their fixed salary is based on each employee's skill level and falls within the framework of salary scales defined by function.

The performance bonus is a share in BCF's net profits and represents a gesture of the Bank's goodwill. It is determined according to individual performance and the Bank's profit results and may vary over time.

It is based on system of management by objectives. Each year, individual objectives (contributions, competencies, risk and conduct) are defined for every employee and are formally documented in the qualification system (annual performance appraisal). All of these criteria, which are weighted differently depending on the function, are taken into account when measuring individual performance.

Powers and determination process

Based on a recommendation of the Executive Board, the Board of Directors determines the total amount of salary adjustments and the annual performance bonus each year. In doing so, it takes into account the Bank's financial results (for example, performance indicators such as changes in income, operating profit and the cost/income ratio), as well as other criteria, such as the economic environment and inflation.

The maximum amount of the performance bonus, variable compensation, and the maximum amount of the individual bonus for each function are linked to fixed salaries.

Employees

Each year, the heads of the divisions and organisational units recommend salary increases and performance bonuses for their employees, in accordance with the instructions issued by the Executive Board. The performance bonus is based on a reference value and takes into account the employee's individual performance and conduct. The bonus is paid in March of the following year. Social security contributions, occupational pension provisions and family allowances are regulated.

Executive Board

The compensation of the Chairman of the Executive Board and each member of the Executive Board is aligned with the average compensation of a reference group chosen by the Bank's Board of Directors.

The variable bonus is determined based on the individual performance of the members of the Executive Board and the Bank's business performance. As for the employees, the bonus amount is determined by a model that takes into account whether the individual goals and overall objectives set for the Bank are achieved.

The bonus is paid in March of the following year. For 2024, the compensation paid to members of the Executive Board totaled CHF 3,094,000. Social security contributions, occupational pension provisions and family allowances are regulated.

Other employment conditions

The Bank pays all expenses associated with engaging in BCF's business activity. In order to simplify procedures, lump-sum expenses are paid to a defined group of employees.

BCF grants special terms and conditions to all employees, including the Executive Board, on all the Bank's services. With respect to loans, the preferential interest rate is in line with the industry and the amount is capped. The Board of Directors decides whether to grant loans or extend credit to members of the Executive Board.

Board of Directors

The members of the Board of Directors are compensated for their services on the Board and the Board committees with a basic lump sum, directors' fees and, where appropriate, a lump sum for additional duties in accordance with Article 18 of the BCF Law. For loans, BCF grants all members of the Board of Directors the same terms and conditions as employees, i.e. a preferential interest rate in line with the industry, applied to a capped amount. In 2024, the compensation paid to members of the Board of Directors totaled CHF 1,039,000.



Organisational Chart as of 01/01/2025

| | | | |
|---|---|--|---|
| Board of Directors Alex Geissbühler Chairman | Audit and Risk Committee Yves Riedo Chairman | Compensation and Nomination Committee Alex Geissbühler Chairman | |
| Internal Audit Fabien Emery | | | |
| Chairman of the Executive Board Daniel Wenger | | | |
| Corporate Center Daniel Wenger | Corporate Clients Laurent Wicky | | Private Clients Cédric Yerly |
| Communication Christine Carrard | Corporate clients 1 Miguel Alverca | Corporate clients Regions Laurent Wicky | Investment Office Julien Yerly |
| Corporate Development Alexander Hayoz | Corporate clients 2 Eric L'Eplattenier | Broye Stéphane Niklaus | Wealth Management Alexandre Renevey |
| ESG/Transformation François Briguet* | Special Financing Christophe Grivel | Glâne David Buchs | Institutional Clients and External Asset Managers Nicolas Tercier |
| Marketing and Sponsorship Steeve Helbling | Corporate consulting and support Camille Nussbaumer | Gruyère Jean-Daniel Ducrest | |
| Human Resources Patrick Betticher* | | Lac Adrian Benninger | |
| Security Frank Irrausch | | Singine Andreas Zbinden | |
| | | Veveyse Christian Rouiller | |

* Member of the Extended Executive Board

| | Products and Services Daniel Wenger a.i. | Finance Luc Jacquat | Legal, Risk and Compliance Christophe Mettler |
|--|--|---|---|
| Private Clients Regions Marylaure Baechler | Client Service Valentin Overney | Accounting Manuel Burri | Compliance and Central File Pierre-Yves Jonin |
| Broye Matthieu Tombez | Product Development Michel Gauthier | Management Control and Data Grégory Baumann | Legal and Litigation Pierre-Yves Cotting |
| Glâne Ludovic Bürgi | Banking Operations Jacques Pierret | Asset & Liability Management Julien Kolly | Risk Management Pierre Romanens |
| Gruyère José Reboredo | Information Technology Development Patrick Wicky | Treasury and Financial Markets Thomas Roggo | Credit Risk Management Alain Pauli |
| Lac Ralf Kaltenrieder | IT Operations Nicolas Zbinden | | Credit Control Rodolphe Gobet |
| Singine Johannes Spring | Real Property and Logistics Patrick Neuhaus | | |
| Veveyse Philippe Dupasquier | | | |
| Sarine David Sturny | | | |



BCF on the Path to Sustainability

BCF's corporate responsibility is reflected in its commitment to addressing economic, ecological and social issues.

As the Canton's leading bank, BCF plays a key role in contributing to the Canton of Fribourg, its municipalities and its parishes by paying funds that include the remuneration for the Canton's guarantee and for the endowment capital, and taxes.

BCF is one of the founding members of the Carbon Fri Foundation, which aims to promote reduced CO₂ emissions by businesses in Fribourg. All the funds collected are redistributed throughout the economic fabric of the Canton by supporting local projects.

BCF's purchasing policy is a concrete example of the Bank's support of local SMEs. The Bank also offers training and information to our clients in the area of cybersecurity and data protection.

BCF plays an active role in society by staunchly supporting local sports, cultural and social activities in the Canton. The Bank has entered into more than 100 partnerships that foster close ties with nearly a thousand clubs and entities affiliated with various umbrella organisations.

A charter for a sustainable and responsible future

At BCF, our business activities are focused on long-term success and on the creation of sustainable added value. We aim to have a positive influence on the region in which the Bank operates by supporting sustainable development for many years.

For BCF, choosing sustainable development means doing business successfully over the long term, while acting responsibly with respect to society and the environment. This approach is spelled out in concrete terms in our Sustainable Development Charter and our Sustainability Report.

At BCF, ESG (Environment, Social, Governance) responsibility is exercised through an internal working group. Composed of representatives from the bank's various sectors, it evaluates the achievement of objectives, guarantees the consistent implementation of ESG principles in all activities and ensures a transparent presentation of sustainable development performance.

BCF is committed to meeting sustainable development goals (SDGs) and to aligning its management and core business more and more closely with these goals. In the BCF Sustainable Development Charter, it sets goals and defines the principles that the Bank commits to uphold.

Environmental commitment

BCF is deeply concerned about the Bank's environmental impact. Each year, the Bank reduces its CO₂ emissions. BCF is Carbon Fri certified, which confirms that it has implemented a climate policy and a plan of measures to reduce greenhouse gas emissions.



CO₂ emissions

With its Carbon Fri label, BCF invests in proportion to its CO₂ consumption in sustainable projects run by the Carbon Fri Foundation, which helps improve the regional ecosystem.



e-banking

Since 2011, BCF has been certifying its online banking products in accordance with ISO 14044, which covers all lifecycle emissions of its online products. On this basis, the Bank also invests in proportion to its consumption of CO₂ emissions to earn the Carbon Fri label.



Green power

The electricity supply is 100% covered by Hydro Fri-bourg green energy. In 2024, BCF installed a 178 m² surface of solar panels on the roof of its headquarters. This installation produces a volume of electricity of 42,000 kWh/year, which is entirely consumed by BCF.



Paper

100% of the paper used by BCF is FSC-certified recycled paper. BCF gives its clients the opportunity save paper by replacing mailings with e-documents.



Waste

Since 2013, BCF has reduced waste by 5%.



Products

BCF offers several eco-responsible products, such as the Eco Mortgage and the Eco Renovation Mortgage loans, and an ESG management mandate for wealth management.



Buildings

The modernisation of the BCF buildings takes into account best practices to optimize the energy balance. The Bank is implementing the new energy efficiency concept applicable to each renovation.



Governance

For several years, an internal group working with the participation of employees from all BCF's divisions has been proposing short-term and medium-term sustainable strategies and objectives.

Social commitment

BCF is actively involved in the areas of culture, society and sports. It is an employer of choice, offering favorable working conditions and encouraging its employees to develop their skills.



Staff

With 548 employees, BCF is one of the largest employers in the Canton. Its physical network of 26 branches ensures that the Bank maintains close ties with its clients.



Public transport

BCF supports the purchase of public transportation passes for its employees. Business trips are made by public transport whenever possible.



Youth

BCF is committed to training, investing the necessary resources in the supervision and training of the Bank's apprentices and trainees. In 2024, 20 apprentices and 5 trainees were trained at BCF.



Suppliers

BCF works with local suppliers whenever possible as a means to contribute to the economic life of the canton. In 2024, CHF 13.4 million worth of work and orders were awarded to local SMEs.



Health and safety at work

BCF is committed to providing favorable working conditions. It takes measures to protect health and safety in the workplace.



Contributions/Taxes

In 2024, BCF played a key role as contributor by paying CHF 107.9 million to the Canton, municipalities and parishes of Fribourg. This amount includes the remuneration for the Canton's guarantee and for the endowment capital, and taxes..



Equal pay

BCF is committed to gender-equal pay.



Sponsorship

BCF sponsors a number of local associations and events, thereby contributing to the social fabric of the canton. In particular, BCF helps to promote access to quality journalism through its Zeitung in der Schule (ZISCH) initiatives with the Freiburger Nachrichten. In 2024, the amount the Bank spent on sponsorships reached CHF 4.2 million.



Continuing education

BCF encourages the professional development of its employees by offering continuing education programs that allow employees to develop their skills.

Financial year 2024

Strategy

In November 2024, the Board of Directors approved the strategy and strategic objectives for the next three years from 2025 to 2027. BCF continues to stand out through its proximity to its customers. Support for businesses in the canton's economic fabric remains a key element. On the private customer side, the Bank will strengthen its approach by expanding its advisory and investment solutions.

Profitability

Operating profit reached 236.5 million francs, an increase of 12.3 million francs (+5.5%).

Efficiency

Once again this year, BCF has been very economical with its resources. The cost/income ratio (the ratio between operating expenses and operating income after depreciation) stands at 35.3%.

A strong capital base

To measure the Bank's solidity, FINMA has defined a minimum capital ratio of 12%. With a CET1 ratio (core capital) of 18.93%, BCF fully complies with FINMA's regulatory requirements.

Investments in the network

For BCF, personal ties and close contact with its clients is essential. That is why it continued to invest in its branch network in 2024. In particular, the Domdidier premises have been completely renovated and modernised. At Headquarters, the first-floor meeting rooms have been completely renovated to welcome customers in the best possible conditions.

98 million allocated to the Canton

Thanks to its excellent 2024 results, BCF is paying the Canton the sum of 98.0 million francs. Taking into account the taxes paid to the Canton, the municipalities and the parishes, a total of 107.9 million francs is being paid to the Canton's public authorities.

Human resources

With 548 employees, Banque Cantonale de Fribourg is one of the main employers in the Canton of Fribourg. It offers its employees a secure job in a successful company, attractive working conditions and top-quality training.

In 2024, BCF employees successfully completed 48 higher education courses, including 2 postgraduate diplomas, 4 HES-SO Bachelor's degrees, 2 federal diplomas, 6 CYP, 22 diplomas or certificates, and 12 certifications. 20 apprentices and 5 trainees are currently in training.

Support for businesses in Fribourg

BCF fulfills its mission by contributing to the support of the cantonal economy. The Bank established the Corporate division in view of our staunch commitment to this segment. This division offers a comprehensive range of products and services as well as individualised service for the various economic players in the region. Essentially a "bank for business and entrepreneurs" this division actively provides expert advice to all types of companies. It supports the development of industrial, independent, and professional real estate entities as well as municipalities and public-law corporations by providing a wide range of products and services essential for their operational and financial activities. For example, BCF covers companies' needs for working capital, financing, foreign exchange, and bank guarantees.



With advisors firmly rooted in the economic fabric of the region, BCF delivers pragmatic solutions especially suited to meet its clients' needs. The expertise and solid experience of the special financing team provides additional support to start-ups, complex financial arrangements, and corporate succession transactions. Corporate succession is a central, essential concern given that one out of every two business leaders is over the age of 50.

With its presence through 26 branches and its decision-making centres throughout the canton, the BCF maintains and develops lasting relationships with its business clients by effectively determining viable proposals while understanding local constraints.

Real estate

In 2024, real estate prices increased, with contrasting trends between apartments and single-family homes, as well as significant differences depending on the location. At the same time, the Swiss National Bank (SNB) continuously lowered its key rate from 1.75% to 0.50%. The study of the Fribourg property market, published in collaboration with the consultancy firm Wüest Partner SA, confirms these trends. Population growth and the increase in the number of small households have influenced demand, reducing the vacancy rate and pushing rents upwards. Despite an uncertain economic context, property has confirmed its robustness and its appeal to investors.

As at 31/12/2024, the division dedicated to real estate companies and professionals had client receivables totaling more than CHF 13 billion.

BCF complies with the guidelines in effect issued by the Swiss Bankers Association (SBA) that govern the review, evaluation and processing of loans secured by real estate pledges as well as the guidelines on minimum requirements for mortgage financing. Its rules governing the granting of mortgage loans are based on the principles of caution and thorough analysis. BCF's methods are based, among other factors, on the client's financial situation and the property being financed.

Wealth Management

The transformation of Wealth Management activities, which began in 2023, continued with the launch of a new distribution management mandate. This development is part of a global wealth approach, integrating real estate assets, corporate shareholdings, pension fund assets and securities portfolios. Based on an in-depth understanding of each client's professional and personal background, the advisors propose strategic solutions that go far beyond simple stock market transactions.

BCF Wealth Management offers discretionary management and advisory mandates that strictly comply with regulatory requirements, thus guaranteeing high-quality advice. In addition, BCF integrates the ESG preferences of its clients into its management, enabling them to invest in accordance with their values.

Advances to customers by business line
(as a % of advances to customers)

| | | | |
|-----|------------------------------------|------|-------------------------------------|
| 1.2 | Agriculture | 3.9 | Financial and insurance activities |
| 2.0 | Manufacturing industries | 16.6 | Real property activities |
| 0.6 | Water production. waste management | 1.9 | Scientific and technical activities |
| 3.2 | Construction | 3.1 | Public administration |
| 2.3 | Trade | 0.8 | Education |
| 0.8 | Hotel and restaurant industry | 2.5 | Health and social work |
| 0.2 | Information and communication | 0.5 | Arts and entertainment |
| 1.1 | Transportation and storage | 1.8 | Miscellaneous |
| | | 57.5 | Private households |

These services are provided by employees based in the Canton of Fribourg. They receive the support of Wealth Planning specialists who are dedicated to helping Fribourg's numerous entrepreneurs and employees in their transition to retirement by optimising the management of their assets. The structuring of assets at BCF makes it possible to distinguish among solutions for short-term liquidity needs, investments for a secure retirement, and optimal transmission of wealth to the next generation.

Serving the public

BCF is at the service of the people of Canton of Fribourg. The 'Private Clients' division is responsible for managing relations with private individuals and offers tailored and personalised products and services in the areas of financing, wealth management, pension planning and financial planning, as well as in the context of its activities for institutional clients and third-party managers.

BCF has a network of 26 branches spread across the seven districts of the Canton. Direct and local advice to clients remains one of its priorities, which is why the Bank is continuing to renovate its branches in order to welcome and serve its clients in optimal conditions that are adapted to the evolution of the market and society. In this context, the Ependes branch will be replaced by a new site in Marly in the course of 2025.

Products and Services

Instant incoming payments now available

Instant payment is a bank transfer that takes place in real time. Unlike traditional payments, which can take several hours or even a few days, this new type of payment allows transfers to be made in just 10 seconds, 24 hours a day, seven days a week.

Instant payments are made via e-banking or mobile banking and are subject to the same security standards as conventional payments.

To use this service, the sender's and recipient's banks must be able to handle instant payments. For BCF clients, only incoming instant payments will be available initially. The functionality for outgoing instant payments will be activated over 2025.

Traditional transfers are of course still possible. Instant payments are an additional service. Currently, they are limited to CHF 20,000 and only possible in Switzerland, on accounts in CHF.

SARON commercial loan

In response to demand from corporate clients, BCF launched the SARON commercial loan on 1 July 2024. This enables companies to obtain a short-term, renewable loan backed by the SARON (Swiss Average Rate Overnight). The SARON is a reference interest rate for the Swiss franc set based on overnight transactions by Swiss banks and the SNB.

This offer is a good alternative to traditional investment credit and other fixed-term advances for business clients who want a variable, transparent rate based on the money market, and which allows them to remain flexible in terms of repayment and changing their financing model.

Pro Senectute training courses and conferences

Cases of fraud are on the increase, particularly affecting senior citizens. In collaboration between the Private Clients division and marketing, an approach has been initiated with ProSenectute.

This approach has made it possible to define three concrete solutions to this problem: training for eight ProSenectute volunteers on the BCF's digital products, a course for senior citizens (10 participants), and the organisation of conferences on financial scams and fraud, bringing together 310 people in two sessions. This initiative will continue in 2025 with an expansion to include other partners.

In addition, every Wednesday afternoon, personalised technical support is offered to customers on the topics of e-banking, mobile banking and TWINT. These sessions, which are very popular, illustrate the Bank's constant commitment to its customers.

FRiBenk.ch 2.0 – Mortgage online

The new version of FRiBenk.ch simplifies access to mortgages online, enabling clients to finance their property quickly and easily and on favorable terms. Thanks to an improved interface and optimised process, it is now even easier to obtain a personalised offer and finalise a financing with complete peace of mind.



The completely renovated Domdidier branch

Real estate

In 2024, the BCF continued to modernise its branches, carrying out a major renovation project and conducting several studies, always with the aim of offering its customers and employees friendly spaces that are adapted to contemporary requirements.

At the Head Office, a reception hall and ten new meeting rooms have been fitted out on the 1st floor. This major work was carried out under the direction of the architect Mario Botta. These spaces are made available to the advisors to welcome customers in optimal conditions.

Domdidier branch

The Domdidier branch has also been given a makeover, having been completely renovated. Representing the values of the land dear to the Broye district, it now offers bright and modern spaces to its customers.

Two counters, one of which is dedicated to advice, and an ATM area, provide a full range of services for our customers.

The new energy consumption standard has also been applied in the branch's premises and will be rolled out throughout the building in the coming months.



BCF's Commitments

BCF's commitment to the social, cultural and sporting life of the Canton reflects our desire to partner with the people who make Fribourg so vibrant.

In 2024, the Bank contributed CHF 4.2 million to the development of culture, sports and social activities.

The Bank aspires to long-term collaborations through renewable partnerships of generally three years. Its partner associations can count on a fixed contribution so that they can devote themselves to their activities with peace of mind.

BCF has entered into more than 100 partnerships, all while boosting its brand image and supporting the Bank's business strategy. These partnerships create close contact with nearly 1,000 clubs, groups and affiliated organizations.

In 2024, BCF was proud of its commitments to:

125 years of Fribourg-Tourisme

Fribourg-Tourisme, the organization in charge of promoting tourism in the canton of Fribourg, celebrated its 125th anniversary in 2024. To mark this milestone, Fribourg-Tourisme chose the artist SAYPE, known worldwide for his ephemeral frescoes. Under the Poya bridge, in August 2024, he created "Bridges", a work depicting a child busy building a bridge using small wooden bricks. SAYPE thus played with the strong symbols of Fribourg, a city of cultural and architectural bridges, which make the Fribourg capital a unique place linking generations, languages and cultures. Banque Cantonale de Fribourg supported this project and thus shares a positive message of mutual support and joint effort.



Friart

The Kunsthalle Friart Fribourg, a renowned contemporary art centre, has been housed since its creation in 1990 in a former cardboard factory in the Basse Ville of Fribourg. It offers a professional platform for the presentation of contemporary artistic forms, thus establishing a valuable link between artists and the public. More than 500 artists have already presented their works in nearly 300 exhibitions.

Since 17 May, 2024, thanks to the support of the Banque Cantonale de Fribourg, access to this internationally renowned venue is now free of charge, with the aim of making contemporary art accessible to a wider audience. Guided tours and educational activities complete the cultural offering in Fribourg.



© Julie Folly

99th Fribourg Cantonal Swiss Wrestling Festival in Frasses

From 3 to 5 May 2024, the wrestling club of Estavayer-le-Lac and Environs organized the 99th Fribourg Cantonal Swiss Wrestling Festival in Frasses. On the Saturday, the boy wrestlers competed against each other. For the first time, the women's wrestling festival took place at the same time as the men's matches. On Sunday, after a day of intense competitions, the men's competition was won by Benjamin Gapany from Marsens, who won the traditional bull, ahead of three other wrestlers from Canton de Fribourg. Throughout the weekend, a packed programme of entertainment complemented the festivities. With more than 100 wrestlers registered and a large audience, the festival was a great sporting and popular success.



© Romain Dassonville/romd.ph

tuttiCanti - "Zäme singe – chanter ensemble"

Despite the inclement weather, the Fribourg choral singing festival tuttiCanti 2024 took place in Wünnewil-Flamatt from 29 May to 2 June 2024, under the theme "Zäme singe – chanter ensemble" (Singing together). More than 3,000 singers from all over the canton gave performances, either freely or in front of a jury; they were warmly applauded by an audience that was smaller than expected, but all the more enthusiastic. Singing workshops, the promotion of bilingualism and support for young people were the key elements of the event. A competition for children in particular was also a great success.



27th Giron des Jeunesses Veveysannes

In mid-August 2024, the 27th Giron des Jeunesses Veveysannes was held in Saint-Martin, bringing together young people from Veveyse, Gruyère and Glâne, under the theme of traditional festivals around the world. Musical entertainment, traditional bingo, dinner-concert, parade of floats and enthusiastic jousting between the 40 teams registered: all the ingredients were present to make this event a real celebration in which nearly 20,000 people took part.



The Banque Cantonale de Fribourg Foundation

The Banque Cantonale de Fribourg Foundation, with a capital of CHF 2.25 million, was created on the occasion of BCF's 100th anniversary in 1992. The purpose of the BCF Foundation is to promote the achievement and development of cultural, artistic and scientific activities and events. Since its creation, more than one million Swiss francs have been invested in a variety of large-scale projects.

La Gustav, the academy for young talents

In April 2024, around twenty young Swiss musicians came together for a creative camp organised by La Gustav, an academy dedicated to young musical talent. During the camp, they composed pieces based on their musical affinities and preferences, with the aim of presenting a high-quality concert combining a variety of styles at a Final Show at Fri-Son in October.

Throughout the creative process, these young artists benefited from the support of music professionals, enabling them to progress and gain the experience necessary to develop their artistic career and stand on their own two feet in their future artistic career.



Recent projects that have received support from the Foundation are presented on the BCF website. The criteria for granting a donation and an electronic application form are also available on the website.

Exhibition by Fanny Dreyer, Vamille and Line Rime

At the end of October, L'Atelier (formerly the Gutenberg Museum) hosted the joint exhibition of three artists from Fribourg: Fanny Dreyer, children's book illustrator, Vamille, manga author, and Line Rime, fanzine illustrator. These multi-talented artists presented their personal works and offered to sign them as part of the BDmania festival. Guided tours by the artists and activities for children completed the event. The success of this exhibition is a wonderful recognition of the talent of these Fribourg illustrators.





A photograph of a modern office interior. The image shows a large glass wall or partition that reflects the interior lights and the geometric pattern of the floor. The floor is composed of large, light-colored tiles arranged in a complex geometric design. The ceiling is visible, showing recessed lighting and a textured surface. The overall atmosphere is clean, professional, and contemporary.

2025 Perspectives

Pursuing the BCF strategy.

The protectionist economic policy of the United States, with the responses of its neighbours and European countries, and the lowering of key interest rates influence the profit outlook for 2025.

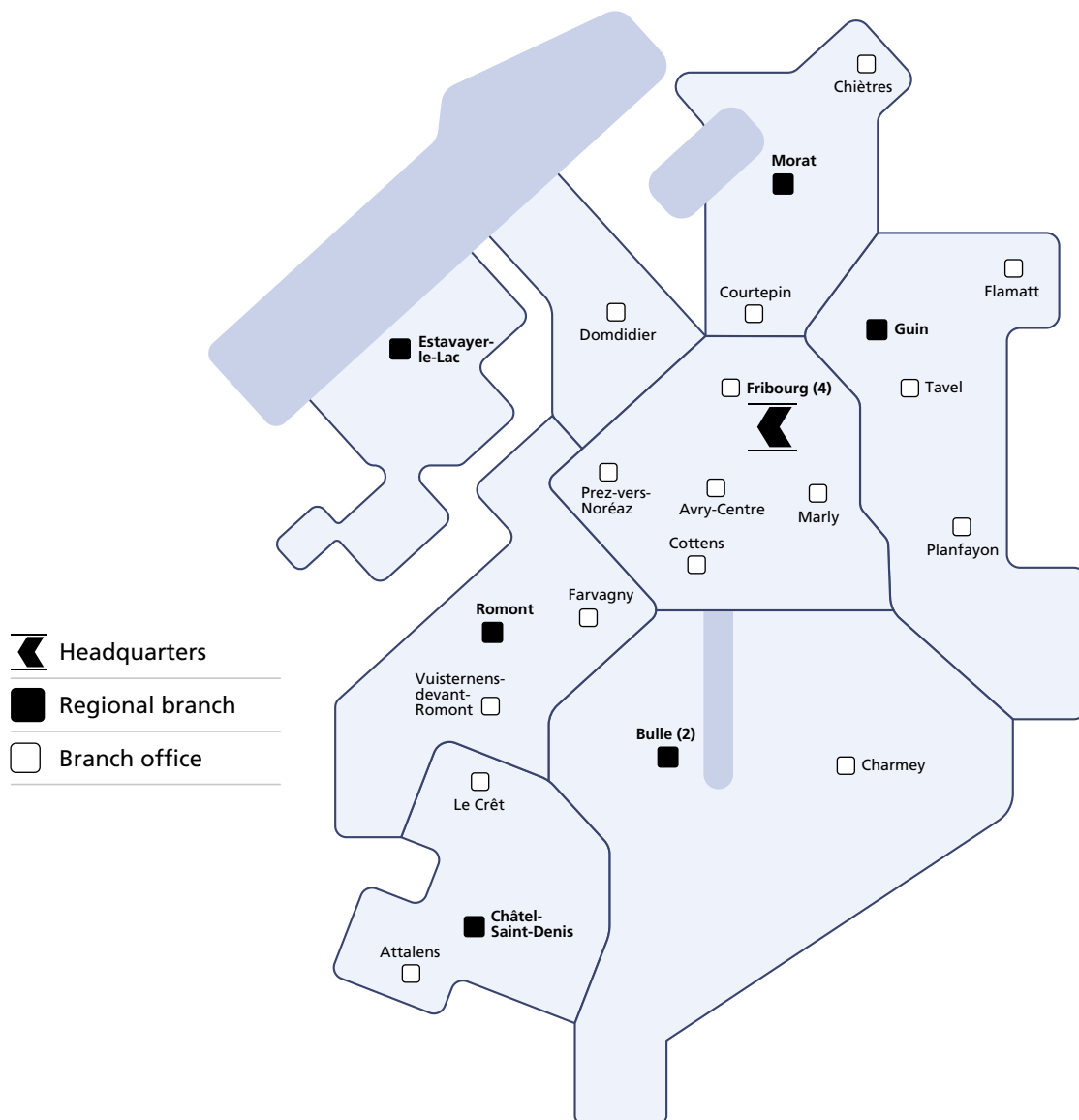
These uncertainties will have a negative impact and BCF anticipates a decline in results in 2025. Thanks to a healthy financial situation, the Bank will nevertheless pursue its strategy of investing in innovation projects, digitalisation and process simplification in order to improve the customer experience.

BCF remains true to its values with decisive and lasting support for the canton's economy and its commitment to the people of Fribourg.



Daniel Wenger, Chairman of the Executive Board, and Mario Botta, architect, in charge of the renovation project for the 1st floor meeting rooms

Network 2025





Financial Report 2024

| | |
|--|-----------|
| Report on the Financial Statements 2024 | 44 |
| Balance sheet | 44 |
| Assets | 45 |
| Liabilities | 45 |
| Income statement | 46 |
| Appropriations | 49 |
| Annual financial statements 2024 | 50 |
| Balance sheet as of 31 December 2024 | 50 |
| Income statement | 51 |
| Cash flow statement as of 31 December 2024 | 52 |
| Statement of changes in equity | 53 |
| Notes to the Financial statements | 54 |
| Report on headcount and operations | 54 |
| Accounting and valuation principles | 54 |
| Risk Management approach | 57 |
| Notes to the balance sheet | 68 |
| Notes to the off-balance-sheet transactions | 78 |
| Notes to the income statement | 78 |
| Statutory Auditor's Report | 82 |
| Further detailed information | 86 |

Report on the Financial Statements 2024

Balance sheet (in CHF thousands)

| | 2024 | 2023 | Change as % |
|----------------------------|------------|------------|-------------|
| Total assets | 28,700,190 | 27,960,449 | +2.6 |
| Advances to customers | 23,510,029 | 22,674,544 | +3.7 |
| Financial investments | 1,425,603 | 1,461,574 | -2.5 |
| Customer deposits | 16,983,336 | 16,507,088 | +2.9 |
| Equity (after repartition) | 2,627,821 | 2,499,146 | +5.1 |

In 2024, the balance sheet total rose by CHF 0.7 billion or 2.6% to CHF 28.7 billion.

This was primarily attributable to the strong growth in advances to customers of CHF 0.8 billion or 3.7%. Mortgage loans alone rose by CHF 0.8 billion to CHF 19.8 billion.

New credit limits totaled CHF 2.8 billion.

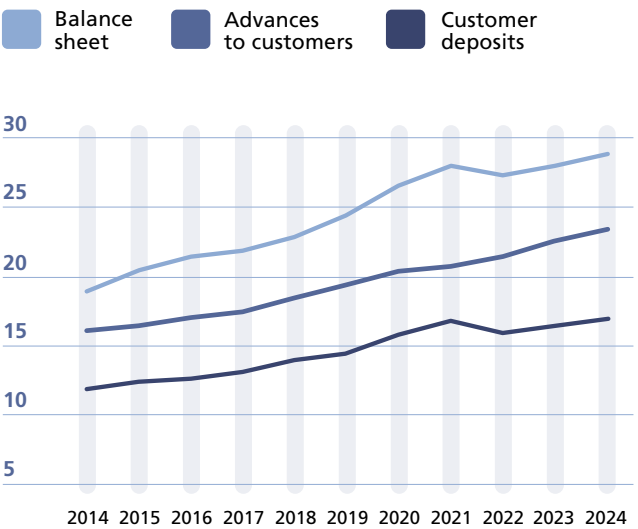
Customer deposits in all forms rose by CHF 0.5 billion to CHF 17 billion.

Cash and cash equivalents

According to Article 13 et ff. of the Ordinance to the Federal Act on the Swiss National Bank (OBN) of 18 March 2004, the average monthly liquidity requirement for the reference period from 20 December 2024 to 19 January 2025, amounts to CHF 462.9 million. In December 2024, the daily average for that period shows a balance of CHF 3,418.4 million, which is CHF 2,955.5 million above the required amount.

In terms of liquidity reserves, the short-term liquidity ratio (LCR) based on the Basel III agreement is 191%, well above the regulatory limit of 100%.

Balance sheet overview 2014 - 2024 (in CHF billion)



Assets

Receivables from banks, consisting mainly of short- and medium-term deposits placed with investment-grade banks, amounted to CHF 0.1 billion.

At the end of 2024, as at the end of 2023, the balance sheet contains no **receivables from securities financing transactions** (reverse repo).

Advances to customers, less value adjustments for default risks, increased by CHF 0.8 billion to CHF 23.5 billion (+3.7%).

Mortgage loans rose by CHF 0.8 billion to CHF 19.8 billion (+4.4%). Other amounts due from customers amount to CHF 3.7 billion.

The significant increase in advances to customers demonstrates BCF's strong support for the economy of the Canton of Fribourg, particularly for SMEs and the real estate market, while practicing sound risk management.

Financial investments amounted to CHF 1.4 billion. They include securities acquired for investment purposes and as a cash reserve (over 99%), precious metals stocks and real estate held for resale.

Tangible fixed assets, consisting mainly of buildings used by the Bank, are recorded in the balance sheet at CHF 80.6 million, after depreciation.

Liabilities

On the liabilities side, **total liabilities to banks** remained stable at CHF 1.2 billion.

At the end of 2024, BCF had no **receivables from securities financing transactions**.

Customer deposits rose from CHF 0.5 billion to CHF 17 billion.

Cash bonds increased by 19.6% to 0.4 billion.

Total borrowings and loans from the central mortgage bond institution amounted to CHF 7.6 billion. In 2024, the Bank issued two new bonds of CHF 250.0 million and subscribed to the various issues of the Pfandbriefzentrale Schweizer Kantonalbanken for a total amount of CHF 520.0 million. During the same period, CHF 363.0 million of the Pfandbriefzentrale Schweizer Kantonalbanken were repaid and CHF 150.0 million of the bonds were repaid.

Provisions comprise amounts to hedge the Bank's operational risks and value adjustments for default risks on off-balance-sheet liabilities. They amounted to CHF 11.8 million, compared to CHF 19.1 million.

The **reserves for general banking risks**, considered as equity capital, were increased by an allocation of CHF 63.0 million. They amount to CHF 782.0 million.

Assets breakdown in %

| | |
|-------------|--|
| 69.1 | Mortgage loans |
| 12.8 | Amounts due from customers |
| 11.7 | Cash and cash equivalents |
| 5.0 | Financial investments |
| 0.4 | Receivables from banks |
| 0.3 | Tangible fixed assets |
| 0.3 | Participations |
| 0.2 | Other assets |
| 0.1 | Positive replacement value of derivative financial instruments |
| 0.1 | Accrued expenses and deferred income |

Liabilities breakdown in %

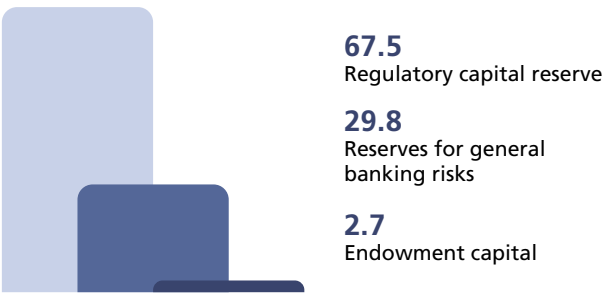
| | |
|-------------|--|
| 57.7 | Amounts due in respect of client deposits |
| 26.4 | Bond and central mortgage institution loans |
| 9.5 | Shareholders' equity |
| 4.3 | Amounts due to banks |
| 1.5 | Cash bonds |
| 0.3 | Accrued expenses and deferred income |
| 0.2 | Negative replacement value of derivative financial instruments |
| 0.1 | Other liabilities |

Shareholders' equity

Shareholders' equity consists of the endowment capital, the legal reserve and the reserves for general banking risks. The endowment capital of CHF 70 million, which has remained unchanged since 1981, is made available in its entirety by the State of Fribourg.

After allocating funds to reserves for general banking risks and after profit distribution, total equity increased by CHF 128.7 million to CHF 2.6 billion. The CET1 (Common Equity Tier 1) ratio was 18.93%. BCF thus largely complies with the relevant requirements.

Breakdown of equity in % after distribution of profit



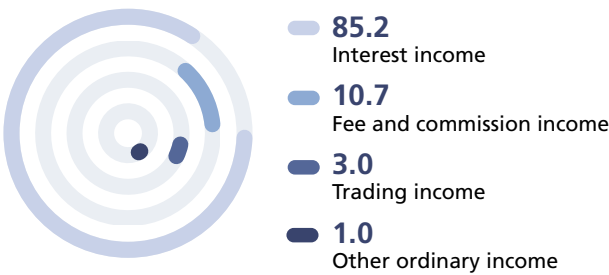
Income statement

BCF is achieving an increase in an exercise described as excellent. This record result allows BCF to pay the Canton CHF 98 million, CHF 23 million more than the previous year. Taking into account taxes, the canton, municipalities and parishes receive a total of CHF 107.9 million.

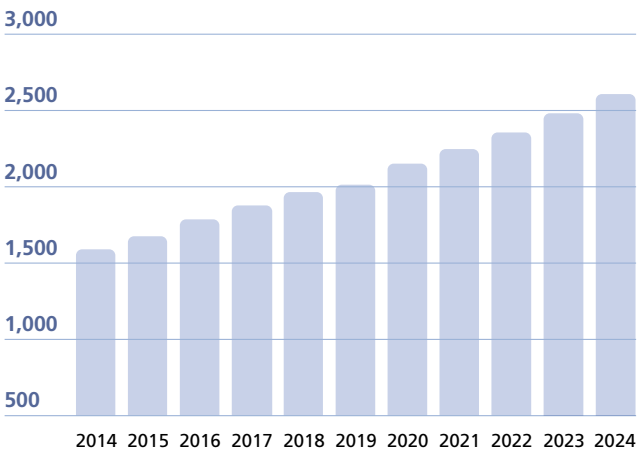
These results also enable BCF to strengthen its equity base and allocate CHF 63.0 million to reserves for general banking risks and CHF 61 million to the retained earnings reserve.

This confirms BCF's strong market position by offering a local service and decisive and sustainable support to the Canton economy, while at the same time achieving very good operational profitability.

Breakdown of operating revenues in %



Evolution of equity 2014 - 2024
(in million CHF)



Operating income

Total **operating income** increased by CHF 24.2 million to CHF 394.7 million (+6.5%).

Interest operations

Net interest income rose by CHF 14.1 million to CHF 336.5 million (+4.4%)

This result, driven by the growth in advances to customers, is also influenced by the favourable change in value adjustments for default risk and losses related to interest operations, amounting to CHF 15.1 million, compared with CHF 28.5 million the previous year.

The share of interest income represents 85% of the total operating income.

Commission and service operations

The **result of commission, wealth management and service operations**, progressed substantially from CHF 3.1 million to CHF 42.4 million (+7.9%).

Trading operations

Income from trading operations, which is mainly composed of income from foreign exchange and precious metals, progressed from CHF 0.9 million to CHF 11.7 million (+7.8%).

Other ordinary results

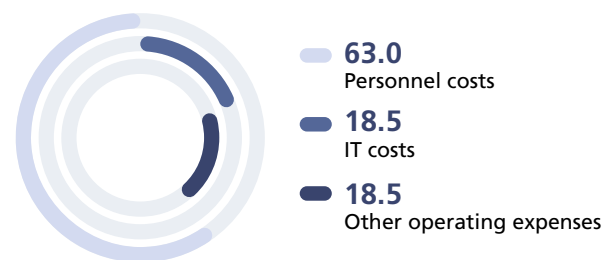
Other ordinary results show income of CHF 4.1 million, compared with excess of expenses of CHF 2.0 million the previous year.

Operating expenses

Operating expenses total CHF 131.6 million, an increase of CHF 4.9 million (+3.9%). Provided for in the budget, they once again emphasise BCF's willingness to invest in the future. With this in mind, it has increased its workforce and continued to modernise its head office and branch network, as well as investing in innovation projects, digitalisation and process simplification.

The cost-to-income ratio after depreciation was 35.3%, confirming the Bank's effectiveness.

Breakdown of operating expenses in %



Results

Value adjustments on participations, depreciation and amortisation of tangible fixed assets and intangible assets

Depreciation of tangible fixed assets and value adjustments on investments totaled CHF 26.7 million, compared with CHF 10.2 million the previous year, an increase of CHF 16.5 million.

Changes in provisions and other value adjustments, losses

Changes in provisions, other value adjustments and losses have no impact on the 2024 operational result.

Operating income

Operating income reached CHF 236.5 million, an increase of CHF 12.3 million (+5.5%).

Taxes

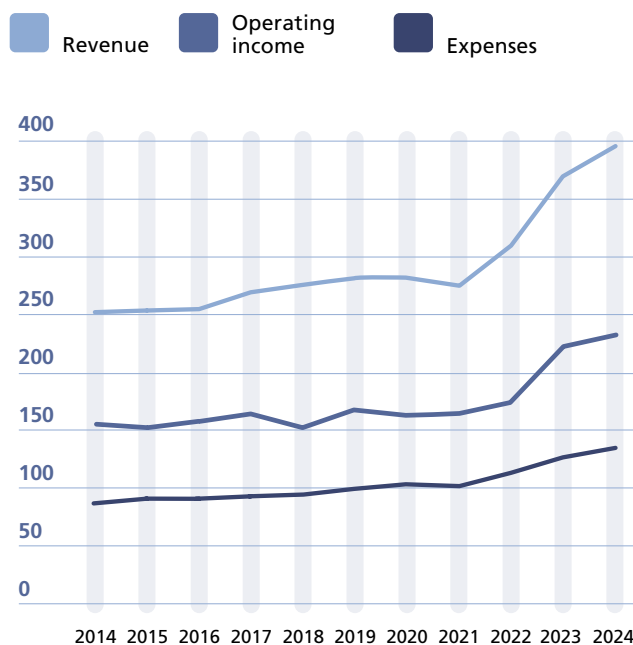
The municipalities received CHF 4.1 million, the parishes CHF 0.5 million and the Canton CHF 5.3 million.

Profit for the year

After an allocation of CHF 63.0 million to the reserves for general banking risks, **profit** amounted to CHF 163.7 million, an increase of CHF 2.2 million or +1.3%.

Development of results 2014 - 2024

(in million CHF)



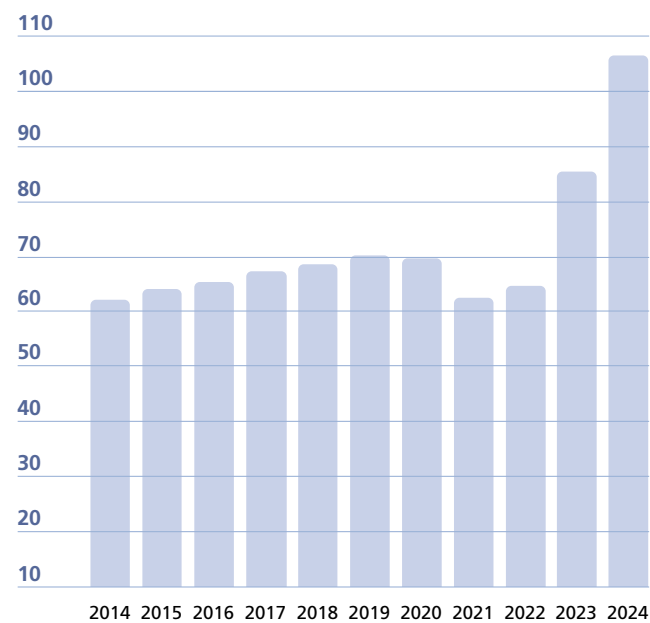
Breakdown of profit

At their meeting on 31 January 2025, the Board of Directors approved the presented financial statements. It recommends the following appropriation of profit and distributions:

| | | |
|---------------------------------------|-----|-------------|
| Profit of the year | CHF | 163,674,530 |
| Retained earnings | CHF | 146,230 |
| Profit shown on the balance sheet | CHF | 163,820,761 |
| Breakdown of profit | | |
| Compensation for the State guarantee | CHF | 30,000,000 |
| Remuneration of the endowment capital | CHF | 48,000,000 |
| Additional payment to the State | CHF | 20,000,000 |
| Allocation to reserve fund | CHF | 61,000,000 |
| Retained earnings | CHF | 4,820,761 |

Evolution of the annual payment (including taxes) to the State 2014 - 2024

(in CHF million)



The Bank expresses its gratitude to its loyal clientèle for their trust. It is committed to continuously improving the quality of its services.

On behalf of the Board of Directors: A. Geissbühler, Chairman
On behalf of the Executive Board: D. Wenger, Chairman

Balance sheet as of 31 December 2024

(in thousand CHF)

| | Change | | | |
|---|-------------------|-------------------|----------------|------------|
| | 31/12/2024 | 31/12/2023 | In CHF | In % |
| Assets | | | | |
| Cash and cash equivalents | 3,363,115 | 3,306,651 | 56,464 | 1.7 |
| Receivables from banks | 129,150 | 264,447 | -135,297 | -51.2 |
| Amounts due from securities financing transactions | 0 | 0 | 0 | 0.0 |
| Amounts due from customers | 3,677,813 | 3,675,499 | 2,314 | 0.1 |
| Mortgage loans | 19,832,216 | 18,999,045 | 833,171 | 4.4 |
| Trading portfolio assets | 8,916 | 4,477 | 4,439 | 99.2 |
| Positive replacement value of derivative financial instruments | 18,343 | 59,360 | -41,017 | -69.1 |
| Other financial assets at fair value | 0 | 0 | 0 | 0.0 |
| Financial investments | 1,425,603 | 1,461,574 | -35,971 | -2.5 |
| Accrued expenses and deferred income | 38,436 | 43,664 | -5,228 | -12.0 |
| Participations | 79,487 | 65,680 | 13,807 | 21.0 |
| Tangible fixed assets | 80,630 | 74,459 | 6,171 | 8.3 |
| Intangible assets | 0 | 0 | 0 | 0.0 |
| Other assets | 46,481 | 5,593 | 40,888 | >100.0 |
| Assets | 28,700,190 | 27,960,449 | 739,741 | 2.6 |
| Total subordinated assets | 75,257 | 75,258 | -1 | 0.0 |
| Of which subject to mandatory conversion and/or conditional write-off | 0 | 0 | 0 | 0.0 |
| Liabilities | | | | |
| Amounts due to banks | 1,241,199 | 1,388,165 | -146,966 | -10.6 |
| Liabilities arising from securities financing transactions | 0 | 0 | 0 | 0.0 |
| Amounts due in respect of customer deposits | 16,554,827 | 16,148,774 | 406,053 | 2.5 |
| Trading portfolio liabilities | 0 | 0 | 0 | 0.0 |
| Negative replacement values of derivative financial instruments | 56,889 | 49,842 | 7,047 | 14.1 |
| Other financial liabilities at fair value | 0 | 0 | 0 | 0.0 |
| Cash bonds | 428,509 | 358,314 | 70,195 | 19.6 |
| Bonds and central mortgage institution loans | 7,564,000 | 7,307,000 | 257,000 | 3.5 |
| Accrued expenses and deferred income | 96,790 | 94,002 | 2,788 | 3.0 |
| Other liabilities | 20,382 | 21,140 | -758 | -3.6 |
| Provisions | 11,773 | 19,066 | -7,293 | -38.3 |
| Reserves for general banking risks | 782,000 | 719,000 | 63,000 | 8.8 |
| Endowment capital | 70,000 | 70,000 | 0 | 0.0 |
| Retained earnings | 1,710,000 | 1,623,000 | 87,000 | 5.4 |
| Retained profit | 146 | 650 | -504 | -77.5 |
| Profit of the year | 163,675 | 161,496 | 2,179 | 1.3 |
| Total liabilities | 28,700,190 | 27,960,449 | 739,741 | 2.6 |
| Total subordinated liabilities | 0 | 0 | 0 | 0.0 |
| Of which subject to mandatory conversion and/to debt waiver | 0 | 0 | 0 | 0.0 |
| Off-balance-sheet transactions | | | | |
| Contingent liabilities | 214,233 | 213,314 | 919 | 0.4 |
| Irrevocable commitments | 191,011 | 225,214 | -34,203 | -15.2 |
| Commitments relating to calls on shares other equity securities | 48,552 | 48,552 | 0 | 0.0 |
| Confirmed credits | 0 | 0 | 0 | 0.0 |

Income statement 2024

(in thousand CHF)

| | Change | | | |
|---|-----------------|-----------------|---------------|------------------|
| | 2024 | 2023 | In CHF | In % |
| Interest and discount income | 510,534 | 468,013 | 42,521 | 9.1 |
| Interest and dividend income from trading operations | 157 | 85 | 72 | 84.7 |
| Interest and dividend income from financial investments | 15,185 | 11,809 | 3,376 | 28.6 |
| Interest expense | -174,142 | -128,990 | 45,152 | 35.0 |
| Net interest income before loan impairment charges/reversals | 351,734 | 350,917 | 817 | 0.2 |
| Changes in value adjustments for default risks and losses on interest transactions | -15,211 | -28,540 | -13,329 | -46.7 |
| Net interest income after loan impairment charges/reversal (NII) | 336,523 | 322,377 | 14,146 | 4.4 |
| Fees and commissions on securities and investment transactions | 20,246 | 19,048 | 1,198 | 6.3 |
| Fees and commissions on credit operations | 2,041 | 2,213 | -172 | -7.8 |
| Fees and commissions on other services | 23,494 | 21,608 | 1,886 | 8.7 |
| Fee and commission expense | -3,379 | -3,565 | -186 | -5.2 |
| Net fee and commission income | 42,402 | 39,304 | 3,098 | 7.9 |
| Net trading income and fair-value adjustments | 11,748 | 10,897 | 851 | 7.8 |
| Gains/losses on disposals of financial investments | 5,950 | 35 | 5,915 | >100.0 |
| Income from participations | 2,849 | 2,815 | 34 | 1.2% |
| Real-estate income | 68 | -170 | 238 | >100.0 |
| Other ordinary income | 477 | 611 | -134 | -21.9 |
| Other ordinary expenses | -5,268 | -5,301 | -33 | -0.6 |
| Other ordinary income | 4,076 | -2,010 | 6,086 | >100.0 |
| Total operating revenues | 394,749 | 370,568 | 24,181 | 6.5 |
| Personnel costs | -82,868 | -81,388 | 1,480 | 1.8 |
| Other operating expenses | -48,713 | -45,272 | 3,441 | 7.6 |
| Operating expenses | -131,581 | -126,660 | 4,921 | 3.9 |
| Value adjustments on participations, depreciation and amortisation of tangible fixed assets and intangible assets | -26,743 | -10,227 | 16,516 | >100.0 |
| Changes in provisions and other value adjustments, losses | 117 | -9,423 | 9,540 | >100.0 |
| Operating profit | 236,542 | 224,258 | 12,284 | 5.5 |
| Extraordinary income | 0 | 0 | 0 | 0.0 |
| Extraordinary expenses | 0 | 0 | 0 | 0.0 |
| Change in reserves for general banking risks | -63,000 | -52,000 | 11,000 | 21.2 |
| Taxes | -9,867 | -10,762 | -895 | -8.3 |
| Profit of the year | 163,675 | 161,496 | 2,179 | 1.3 |
| Retained earnings | 146 | 650 | -504 | -77.5 |
| Profit shown on the balance sheet | 163,821 | 162,146 | 1,675 | 1.0 |
| Appropriations | | | | |
| Compensation for the State guarantee | 30,000 | 44,500 | -14,500 | -32.6 |
| Remuneration of the endowment capital | 48,000 | 11,000 | 37,000 | >100.0 |
| Additional payment to the State | 20,000 | 19,500 | 500 | 2.6 |
| Allocation to fund reserve | 61,000 | 87,000 | -26,000 | -29.9 |
| Retained earnings | 4,821 | 146 | 4,675 | >100.0 |

Cash flow statement as of 31 December 2024

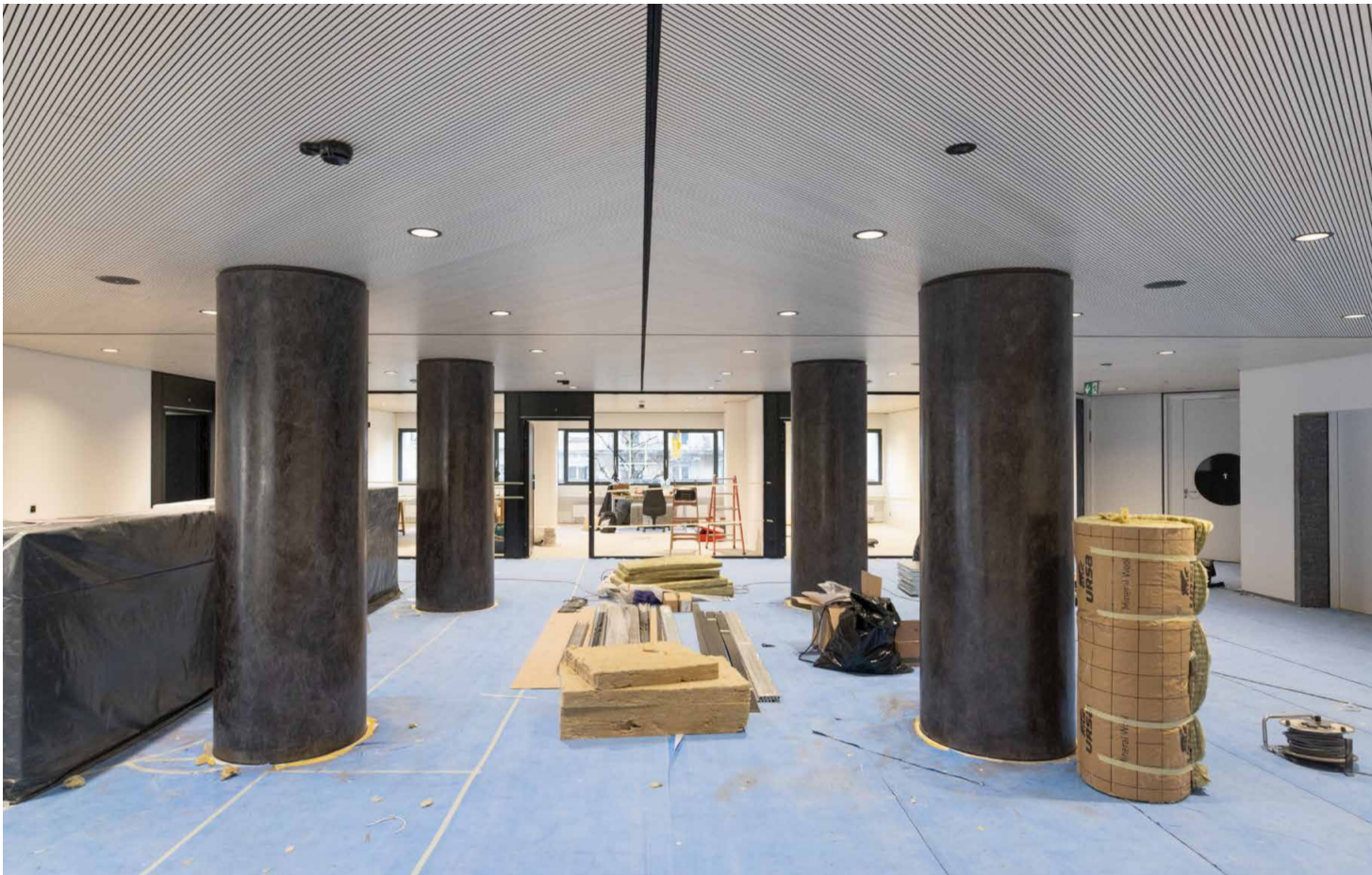
(in thousand CHF)

| | Reporting year | | Previous year | |
|---|------------------|------------------|------------------|------------------|
| | Source | Use | Source | Use |
| Cash flow from operations: | | | | |
| Net profit for the year | 163,675 | | 161,496 | |
| Change in reserves for general banking risks | 63,000 | | 52,000 | |
| Value adjustments on participations, depreciation on tangible and intangible assets | 26,743 | | 10,227 | |
| Provisions and other value adjustments | | 7,293 | 8,874 | |
| Changes in value adjustments for default risks and losses | 7,727 | | 22,592 | |
| Active delimitations | 5,228 | | | 10,526 |
| Passive delimitations | 2,788 | | 7,412 | |
| Payment to the State | | 75,000 | | 57,000 |
| Balance | 269,161 | 82,293 | 262,601 | 67,526 |
| Cash flow from investments | | | | |
| Balance | 0 | 0 | 0 | 0 |
| Cash flow from investments: | | | | |
| Participations | | 32,835 | | 2,081 |
| Real property | | 7,282 | | 5,930 |
| Other tangible fixed assets | | 6,604 | | 8,833 |
| Balance | 0 | 46,721 | 0 | 16,844 |
| Cash flow from banking operations: | | | | |
| Due to banks – short term | | 91,966 | | 34,959 |
| Due to banks – long term | | 55,000 | 45,000 | |
| Receivables from banks – short term | 135,297 | | 217,795 | |
| Receivables from banks – long term | | | 49,965 | |
| Liabilities arising from securities financing transactions – short term | | | | |
| Liabilities arising from securities financing transactions – long term | | | | |
| Amounts due from securities financing transactions – short term | | | | |
| Amounts due from securities financing transactions – long term | | | | |
| Amounts due in respect of client deposits | 406,053 | | 355,420 | |
| Amounts due from customers | | 1,805 | | 448,570 |
| Mortgage loans | | 841,407 | | 678,892 |
| Negative replacement value of derivative financial instruments | 7,047 | | | 12,852 |
| Positive replacement value of derivative financial instruments | 41,017 | | 46,646 | |
| Cash bonds | 114,160 | 43,965 | 109,935 | 45,184 |
| Borrowings | 250,000 | 150,000 | 150,000 | 200,000 |
| Long-term borrowings | 520,000 | 363,000 | 387,000 | 264,000 |
| Financial investments | 35,971 | | 12,899 | |
| Trading operations | | 4,439 | | 1,657 |
| Other liabilities | | 758 | | 27,369 |
| Other receivables | | 40,888 | 449 | |
| Balance | 1,509,545 | 1,593,228 | 1,375,109 | 1,713,483 |
| Cash and cash equivalents status: | | | | |
| Cash and cash equivalents | | 56,464 | 160,143 | |
| Balance | 1,778,706 | 1,778,706 | 1,797,853 | 1,797,853 |

Statement of changes in equity as of 31 December 2024

(in thousand CHF)

| | Endowment capital | Reserves for general banking risks | Retained earnings | Retained profit/loss | Result for the period | Balance |
|--|-------------------|------------------------------------|-------------------|----------------------|-----------------------|-----------|
| Equity at the beginning of the reporting period | 70,000 | 719,000 | 1,623,000 | 162,146 | | 2,574,146 |
| Dividends and other distributions | | | | -75,000 | | -75,000 |
| Other allocations to (withdrawals) from reserves for general banking risks | | 63,000 | | | | 63,000 |
| Other allocations (withdrawals) from other reserves | | | 87,000 | -87,000 | | 0 |
| Profit/loss for the year | | | | | 163,675 | 163,675 |
| Equity at the end of the reporting period | 70,000 | 782,000 | 1,710,000 | 146 | 163,675 | 2,725,821 |



Notes to the Financial statements

Comments on the activity

The Banque Cantonale de Fribourg (BCF) is a legal entity under public law distinct from the State. Its headquarters are in Fribourg.

Staff

As of 31 December 2024, the Bank had 548 employees (31 December 2023: 532) representing 458 full-time jobs (31 December 2023: 443).

Activities

BCF offers the services of a local universal bank. It plays a key role in the Fribourg banking market thanks to its knowledge of the economic fabric and its strong presence. It offers its clients tailor-made solutions. It concentrates its activities in the following areas:

Interest operations

With a share of 85% of total revenues, interest operations are the main source of income. Advances are generally granted in return for mortgage cover on residential, commercial and industrial buildings. Commercial loans are granted in particular to SMEs in all economic sectors of the canton.

Changes in value adjustments for default risks and losses related to interest transactions are deducted from gross interest income and thus directly impact the interest margin.

The majority of interbank transactions are short- and medium-term. For long-term refinancing, BCF uses recourse to the capital market. It issues bonds in its own name at irregular intervals and, as a member of the Pfandbriefzentrale Schweizer Kantonalbanken, participates in the bonds issued by this organisation.

Interest rate risks are managed mainly through interest rate swaps.

Customer deposits, including cash bonds, cover 72% of the advances to customers.

Commission and service business

The commission and service business accounts for 10.7% of total revenues. Securities trading, investment advisory, wealth management, and payment transactions make up the majority of the commission and service business. These financial services are used by private clients, institutional investors and commercial companies.

Trading business

Trading business, which accounts for 3.0% of total revenues, consists mainly of foreign exchange, precious metals and currency transactions carried out on behalf of clients. These transactions are carried out within specific limits, without any significant open positions.

Other areas of activity

To meet liquidity requirements, the Bank manages its own securities portfolio. It consists mainly of fixed-interest positions that can be discounted with the Swiss National Bank for high-quality repo transactions (Repurchase and Reverse Repurchase Agreements). BCF operates through a network of 27 branches, including one online. It also operates 58 ATMs, 23 depomats and 11 self-service areas.

Outsourcing

In particular, BCF has outsourced IT-related activities to Swisscom (Switzerland) AG and document scanning to Swiss Post AG within the meaning of FINMA circular 2018/3 ("Outsourcing - banks and insurers").

Exceptional or subsequent events

No events to report.

Financial statements as of 31 December 2024

The financial statements as of 31 December 2024, in French, German and English, were approved by the Board of directors on 13 March 2025. Subsequently a material misstatement was identified in the income statement of the English version of the financial statements ("Wrong version of the income statement presented"). On 17 April 2025, the board decided to withdraw the initial financial statements in its English version and approved a new corrected version of the financial statements as of 31 December 2024 in English only (the French and German versions are not affected by the misstatement).

Accounting and valuation principles

General principles

The accounting and reporting principles comply with the provisions of the Swiss Federal Law on Banks and Savings Banks and its implementing ordinance, the accounting regulations, i.e., the FINMA Accounting Ordinance and the FINMA Directive 2020/01 ("Accounting for Banks"), as well as the Swiss Code of Obligations. The financial statements are established in accordance with the true and fair view principle (statutory individual accounts) as of December 31.

The figures in the notes and supplementary information have been rounded for publication purposes. Potential discrepancies in addition are therefore possible.

Recording of transactions

All transactions are recorded in the Bank's books on the day they are concluded (trade date accounting).

Translation of foreign currency transactions and balances

Assets and liabilities expressed in foreign currencies are translated at the exchange rates prevailing at the balance sheet date. Income and expenses are translated at the exchange rates prevailing at the dates of the transactions. Gains and losses are recorded in the result of "Trading operations" or in "Other ordinary results".

| Applied prices: | 31/12/2024 | 31/12/2023 |
|-----------------|------------|------------|
| EUR | 0.9416 | 0.927 |
| USD | 0.9045 | 0.837 |
| GBP | 1.13405 | 1.067 |

Cash and cash equivalents

Cash and cash equivalents are recorded in the balance sheet at nominal value.

Loans and advances to banks and customers, mortgage loans

Loans and advances to customers and banks are recorded at nominal value. Impaired loans, i.e. loans for which there are indications that the contractual clauses will not be fully complied with, are valued at their liquidation value. After taking into account the collateral provided, the residual risk of loss on these receivables is covered by individual value adjustments. The valuation of individualized value adjustments takes into account all the client's liabilities.

When the value adjustment is first made, the expense is entered globally under the heading "changes in value adjustments for default risk and losses from interest transactions". Releases of value adjustments or provisions that have become free are also recorded under "changes in value adjustments for default risk and losses from interest transactions". In the event of changes in credit utilisation, the Bank makes a non-income-relevant reclassification between the value adjustment applicable to the corresponding balance sheet position and the provision made for the undrawn portion of the limit. The individual value adjustments are offset on the assets side of the balance sheet against the corresponding active positions.

Interest due and unpaid for more than 3 months, i.e. impaired interest, are automatically and fully classified as provision.

Amounts recovered from receivables written off in previous years are released through the income statement item "changes in value adjustments for default risks and losses from interest transactions".

At the end of each quarter, each impaired receivable is reassessed and the value adjustment is adjusted if necessary.

A value adjustment is also made to cover the inherent risk of default on the non-impaired loan portfolio.

Value adjustments for inherent default risks are created, used or released via the item "changes in value adjustments for default risks and losses from interest transactions" for off-balance sheet positions.

Provisions are made for interest on impaired loans and loans with collection problems, or interest due and unpaid after 90 days.

Securities and precious metals held for trading

Securities and precious metals trading portfolios are always valued and carried on the balance sheet at fair value. Price gains and losses are recognised in the result of «Trading operations». Interest and dividend income from trading portfolios is recognised in the result of "Interest operations".

Financial assets

Interest-bearing securities classified as financial assets are recorded in the balance sheet at their acquisition value, with the premium or discount being amortised until the maturity of the securities (accrual method).

Other financial asset securities and precious metals are valued according to the lowest value principle. The balance of the adjustments in value is recorded under "Other ordinary expenses" or "Other ordinary income".

Properties held for resale are valued at the lower of cost or liquidation value. The liquidation value also takes into account the retention period of the properties.

Repurchase and reverse repurchase agreements

Repurchase and reverse repurchase agreements are accounted for as follows:

- The cash amounts exchanged are reported in the balance sheet under "Receivables from securities financing transactions", respectively "Liabilities arising from securities financing transactions".
- Securities transferred for collateral purposes do not require a balance sheet entry, as the transferring Bank remains the beneficial owner.
- The subsequent disposal of securities received involves a balance sheet entry. This results in a non-monetary liability being recorded at market value.

Participations

Participating interests are valued at no more than their acquisition cost, less economically necessary depreciation.

In the case of participations in companies whose securities are listed on the stock exchange, the valuation is based on the stock exchange value, but not more than the acquisition cost.

Participations of an economic support or sponsoring nature, irrespective of the percentage holding, whose liquidation value is not significant, are valued at CHF 1 in the balance sheet.

Tangible fixed assets

Bank-owned buildings and land, carried at acquisition cost, are depreciated using the declining balance method based on their expected economic life. Land is not depreciated. Renovation work and investments are capitalised if the market value or value in use is increased on a permanent basis or if they lead to an increase in the useful life.

Fixed installations and conversions in own or leased bank premises, the costs of which exceed CHF 50,000, are capitalised and depreciated over a maximum life of 10 years. For leased premises, the remaining term of the lease is taken into account.

Other tangible fixed assets, such as furniture, machinery and vehicles, with a cost of more than CHF 5,000, as well as computer software licenses with a cost of more than CHF 50,000,

are recorded in the balance sheet at their acquisition value and depreciated over their useful life, but over a maximum of 5 years.

The principle of individual valuation is applied.

Accrued expenses and deferred income

The timing of income and expenses for the year is recorded in the accruals and deferrals accounts.

Provisions

Provisions for operating risks and for the economically necessary default risks of off-balance-sheet liabilities are valued individually on the reporting date.

Value adjustments to balance sheet receivables are deducted from the corresponding items and are therefore not included in this position.

Reserves for general banking risks

Reserves for general banking risks are set aside to cover latent risks in the business by debiting the item "Changes in reserves for general banking risks". They are recognised as core capital within the meaning of the Swiss Federal Banking Ordinance and are not subject to tax.

Commissions on credit business

The Bank records lending fees under «Interest income». Commissions on the conversion of variable rates into fixed rates are recorded under "Commission transactions".

Derivative financial instruments

As part of its Asset and Liability Management activities, the Bank enters into interest rate swaps on its own behalf to hedge fixed-rate loans granted to customers. These hedging transactions are subject to periodic effectiveness tests. The results are recorded under the same income statement heading as the hedged transaction.

Trading positions in derivatives are valued at market prices.

The Bank also carries out forward exchange transactions involving the purchase and sale of covered options on behalf of its clients and for its own account. The positive and negative replacement values of open derivative financial instruments on the balance sheet date are recorded under the heading "Positive replacement values of derivative financial instruments" and "Negative replacement values of derivative financial instruments" respectively. The volumes of all open contracts are shown off balance sheet.

Pension commitments

The Bank has an independent pension fund for the occupational benefits of its employees, known as the «Caisse de prévoyance du personnel de la Banque Cantonale de Fribourg», which is an institution under public law. The pension fund is registered with the Bernese supervisory authority for pension funds and foundations in accordance with Article 48 LPP.

The financial statements are prepared in accordance with Swiss GAAP FER 26.

The employer has no contribution reserves in the Fund.

As of 1 January 2025, 524 active insured and 214 pensioners are affiliated to the pension fund (previous year: 512 and 201).

The pension plan adopted is a so-called «defined contribution plan» and covers the usual pension risks, i.e. retirement and disability pensions, as well as the risk of death. The contributions paid by the Bank to the pension fund for 2024 amounted to CHF 9.7 million (see table on page 74).

Taxes

Taxes are calculated on the basis of the Bank's results and take into account the principle of linking to the reporting period.

Changes in accounting and valuation principles

There were no changes in accounting and valuation principles during the year 2024.

Factors affecting the Bank's economic situation

The successive reductions in the key interest rate will impact the 2025 interest result. However, the profit outlook remains intact and financial strength will be further improved.

The Bank's approach to risk management

Objectives

Banking activities consist of taking strategic and business, credit and market risks in order to generate economic profit and, indirectly, by gaining an exposure to operational risks. Within BCF, all risks are managed in an integrated and consistent manner by a process that concerns all functions of the Bank and whose overall objectives are:

- Knowledge of risk exposure, in the sense that it is assessed, monitored and carried forward appropriately in relation to the economic and regulatory environment.
- A match between the Bank's risk-taking capacity and its risk profile.
- An optimisation of returns in comparison to the risks taken and thus to the equity capital committed.

The Bank's risk management is based on the following principles:

- The Bank takes strategic and business risks, credit risks and market risks with the aim of generating economic profit.
- The Bank seeks to minimize its exposure to operational risks arising from its operations.
- All risk-taking is clearly in line with the Bank's business activities and the risk profile concerned.
- The risk-taking level must be in line with the risk tolerance in terms of variability of the operating result and the target level of equity capital.
- The Bank shall enter into and maintain solely positions of which it is aware and can manage the risks.
- All risks are assessed and monitored with regard to their financial impact, their regulatory impact and their impact on the Bank's reputation.
- Risk management applies the same definitions, methodological principles and organisational principles throughout the Bank.
- The Bank is continuously improving its risk assessment and control methods and processes by seeking quality approaches in line with the risks taken.

- The Bank aims for a high level of risk management culture and skills. It is based on the Basel Committee's best practices and recommendations.

Risk structure

The Bank monitors five risk categories for all of its activities:

- **Strategic and business risk** that, in the case of strategic risk, results from the occurrence of a change in the economic or regulatory environment that affects the Bank's strategic choices in a negative way or, in the case of business risk, for a given strategy, results from the effects of economic or competitive changes that negatively affect business decisions.

Credit risk that results from the possible event of default by a counterparty. Credit risk is intrinsically associated with any credit exposure.

- **Market risk** arising from the possible event of adverse changes in market parameters, in particular prices and rates, implied volatilities, and other underlying effects in the markets.
- **Liquidity risk** is also considered to be a market risk both in terms of the possible difficulty of structural refinancing of the business and the potential problems associated with short-term liquidity management. Market risk is intrinsically linked to market exposures.
- **Operational risks** arising from the possible occurrence of an inadequacy or malfunction due to inappropriate processes, persons or systems, or to malicious acts. Operational risk includes non-compliance in the sense of risk of non-compliance with the Bank's legal provisions, norms and rules. Operational risks are intrinsically related to business operations. These risks are analysed and managed according to their potential impact.

There are three types of impact:

- **Financial impact**, i.e. a decrease in net profit, the book value and/or the economic value of the equity.
- **Regulatory impact**, i.e. intervention by the authorities resulting from a breach of the legal and regulatory framework to which the Bank is subject.
- **Reputational impact**, i.e. adverse public information about the Bank, the seriousness of which depends on the reaction of the Bank's main stakeholders.

Risk management governance

BCF's risk management governance and organisation are defined according to the same basic principles for all risks. The main responsibilities for risk management are summarised as follows:

- The Board of Directors (BoD) decides on the basic principles of risk management and the Bank's risk-taking strategy. The BoD adopts the BCF risk policy developed by the Executive Board (DIGE) and ensures that an effective internal control system (ICS) is in place.
- The Audit and Risk Committee (CAuR) is responsible for establishing and operating risk management in accordance with the framework defined by the BoD.
- The Executive Board (DIGE) is responsible for the development, implementation and operation of risk management and the Internal Control System (ICS). It establishes the guidelines and instructions that regulate responsibilities, competencies and risk control measures.
- To this end, the DIGE has set up a Risk Committee. Each month, the Committee analyses the status of the main risks incurred by the Bank and of environmental and social risk factors.
- The Risk Management, headed by the Chief Risk Officer (CRO), coordinates risk management between the various units. It is responsible for developing and improving the Bank's risk control principles and methods. It is also responsible for monitoring the institution's risk profile and insuring risk reporting. It also reviews the suitability and effectiveness of the ICS in coordination with the business and risk managers.
- For any exposure to the Bank's credit risk, the Credit Risk Management is responsible for the portfolio-wide risk analysis and the monitoring of counterparty exposure. Responsibility for designing and monitoring the credit risk assessment models for the positions, particularly when dealing with credit processes, lies with the Bank. It is also responsible for defining and implementing criteria and standards for decision-making and credit monitoring.



Credit risk

Credit risk refers to a potential inability of a party to meet its obligations to the Bank. The non-performance or imperfect performance of a counterparty's commitments may ultimately result in a financial loss for the Bank.

More specifically, credit risk refers to the risk of default by the counterparty, i.e. the risk of losses incurred as a result of the default by a borrower of its contractual obligations. In addition to the financial loss of the total or partial amount of the credit (settlement risk or principal risk), credit risk includes also unrealised gains resulting from the non-payment of the debt (replacement cost risk).

As regards the entire credit risk, the Bank aims to protect itself against three possible types of impact, namely financial risk, regulatory risk and reputational risk.

- Credit activity, general control and monitoring of credit risk

The Bank is exposed primarily to credit risk arising from customer loans. To this end, the Bank proposes a wide range of customary loans, covered or uncovered, conditional commitments as well as irrevocable commitments to both natural persons and legal persons.

The aim of the credit policy, laid down and validated by the Board of Directors, is to define the mandate for the organisation of credit risk, the strategy for taking credit risk, the delegated roles, responsibilities and competencies with regard to organisation and the process of analysing and granting credit as well as the rules and principles governing the control of credit risk. Moreover, the aim of the credit policy is to control exposure and distribution of credit risk by means of limits and thresholds that are applicable and useful to the conduct of credit risk. Its application is designed to achieve expected quality targets across the credit portfolio. Thus, the pursuit of the objective of profitability for the credit business is framed by the risk approach arising from the credit policy and also meets the applicable prudential rules.

Overall, the Bank aims to maintain a portfolio of high quality credit in line with the internal regulatory framework (maximum lending rate, maximum repayment and redemption periods, financial capacity calculation, debt capacity calculation, etc.) and, to limit the risk of concentration diversified in terms of client segments, economic sectors, types of loans and geographical location with respect to both counterparties and real estate collateral in Switzerland.

In particular, the internal rulebook aims to ensure a uniform, credit-risk-appropriate analysis and authorisation practice. As a matter of precision, the internal regulatory framework sets out the rules, standards, principles and guidelines in effect and aims to establish an appropriate working framework and uniform code of conduct for the management and oversight of credit risk on a regular, accurate and comprehensive basis. On this basis, the Bank is in a position to monitor credit risk

at both the level of individual transactions and at the level of the credit portfolio.

The organisation and operational delegation of powers with regard to granting loans is determined by the Board of Directors through the loan policy. Both the organisation and the delegation are risk-oriented and are based on multiple dimensions, such as counterparty risk (rating class), counterparty segment, level of overall exposure, type and coverage of collateral received as well as type of financing. The Credit Committee is the highest authority for granting credit within its competence. The Committee is chaired by the CEO, is composed of members of the Executive Board and is managed by the Credit Risk Management organizational unit. At the same time, the granting of credit to the governing bodies (members of the Board of Directors and members of the Executive Board) is the responsibility of the Board of Directors.

All counterparties requiring credit approval are subject to risk assessment. The creditworthiness of the counterparty is an essential component of the credit analysis. As such, any credit commitment requires prior analysis and validation of the counterparty's rating. The rating or risk class reflects the default risk of a counterparty. To measure and manage the risk of counterparty default, the Bank evaluates counterparties using a rating system that classifies debtors into twelve risk classes. At the same time, the Bank relies on segmentation using different risk models depending on the nature of the debtor. Counterparty ratings are determined and managed by means of expert rating systems for the following client segments: private clients, corporate clients (SMEs and big companies) and real estate professionals (natural or legal persons). The expert rating systems for counterparty ratings used by the Bank are provided by RSN Risk Solution Network AG. Counterparties are assessed on the basis of dedicated models and homogeneous criteria for the same population. These systems allow the Bank to adequately determine the requirements and conditions applicable to each financing.

Updating counterparty rating classes allows the Bank to monitor the default risk effectively and regularly throughout the term of the commitments. In addition, all credit commitments are reviewed periodically as part of a dynamic credit management, based on their risk, and then submitted for an extension of jurisdiction.

Generally, the Bank limits credit risk by splitting them and demonstrating a high level of caution about the quality of counterparties and collateral. Accordingly, the Bank will exclusively grant loans to counterparties who have the financial capacity to meet their commitments and ultimately repay them. Counterparties must be both solvent, honourable and trustworthy. Indeed, the integrity of counterparties, knowledge of the subject matter of financing, plausibility and proportionality of credit transactions are key aspects of the analysis and decision from the Bank's perspective.

The Bank conducts credit transactions primarily in the canton of Fribourg and in an area bordering the cantonal borders.

Alternatively and to a limited extent, the Bank exercises credit activity in a geographical area that is extended and limited to Switzerland's borders. Geographical exposure to credit risk is controlled by means of risk tolerance and monitoring indicators.

Loans constituting one or more Exceptions to Policy (EtP) are specifically monitored both at the level of individual loans and at the level of the credit portfolio. EtP are loans secured by pledged real estate with one or more exceptions to the internal rules on lending rates, repayment periods and/or financial capacity calculation, or the SBA guidelines on minimum requirements for mortgage financing.

Throughout the individual credit management cycle, at regular intervals and in the absence of extraordinary events, a risk-based periodic control procedure is applied, depending on the counterparty segment and risk, the type and amount of credit commitments, the nature and coverage of collateral, and the presence or absence of EtP. The main purpose of this procedure is to reassess the creditworthiness of the counterparty (rating), to analyse the stability and development of contingent collateral and to conduct a financial capacity review. In addition, counterparty and collateral-related warnings and special events that have an impact on credit risk are actively monitored. If such signals or events are detected, a review of the credit exposure is carried out.

In addition, with respect to the loan portfolio of the Bank as a whole, additional aggregated risk measures are implemented in the form of both past and advanced indicators, such as the calculation of the migration of counterparty ratings or in the form of stress tests on all or part of the portfolio and according to the course of various stress scenarios. To this end, periodic reports are produced by the Credit Risk Management organisational unit and presented to the Bank's various committees and bodies. These reports also include a monitoring of the credit risk appetite as well as an analysis of the credit portfolio structure covering the allocation of the portfolio using multiple structural characteristics based on counterparty risk and concentration risk.

- Credit collateral evaluation

Collateral pledged and deposited as security for loans is valued in accordance with standard, uniform norms.

Mortgage-backed loans

The market value of the properties is periodically estimated in accordance with established supervision rules and principles and by means of computer-based real estate valuation tools in line with the typology and allocation of the properties. In this regard, macro- and micro-location, construction standards, obsolescence and renovation cycles, as well as the sustainability of actual or projected income and vacancy rates for investment properties are taken into account.

The Bank uses two third-party valuation systems provided by Wüest Partner AG:

- One for the appraisal of owner-occupied residential properties based on a hedonic valuation model which compares actual market real estate transaction data, based on detailed real estate characteristics.
- One for the appraisal of investment properties, including rental, commercial, administrative, industrial or craft real estate, based on a capitalization model. This methodology takes into account the sustainable income from the building as a central parameter for determining the performance value.

Moreover, the evaluation of large-scale construction projects and special or complex buildings due to their typology and/or use generally involves an additional external real estate appraisal commissioned by decision of the Bank.

When granting loans secured by pledged real estate, the Bank uses the lowest value between the internal or external valuation for certain specific cases set out above and the actual transaction price or cost price.

The value of the mortgages will be reviewed and updated as part of the regular credit review or in the event of an increase in credit risk caused by a restatement of the credit position. (e.g. adjustment of credit limit, adjustment of depreciation, etc.) or detected in the context of normal monitoring activity.

Delays in payment of interest and/or principal are monitored and analysed in order to identify mortgage loans with actual risk exposure. On this basis, these claims are subject to detailed scrutiny which may require the implementation of risk reduction measures (e.g. partial redemption requirement, request for additional collateral, etc.) or individual adjustments in the event that there is insufficient collateral after calculating the liquidation value of the collateral.

Securities-backed loans

The liabilities and the value retained to cover loans secured by securities admitted by the Bank are calculated daily and monitored on a regular basis. These credits are provided against the pledge of securities such as book balances, current and liquid market securities, rights arising from insurance policies or any other eligible security under multiple applicable criteria taking into account mainly their transferability, liquidity and marketability.

The Bank calculates and applies discounts on market values in order to hedge against market and monetary risks of marketable and liquid securities as well as to determine the cover value or lending amount. Discounts are also calculated and applied for other types of securities that are not officially listed on a market, depending on the nature of the product or contract and the associated underlying risks.

If the pledged value of the collateral falls below the amount of the credit commitment, the Bank requires either a partial reduction of the debt or additional collateral in order to re-establish credit cover. If the collateral shortfall or extraordinary market conditions persist or increase, the Bank can realize the guarantees in order to unwind the credit commitment.

Unsecured loans

Unsecured loans are generally granted to counterparties in the segments of corporate clients, public-law entities or entities treated as public-law entities. These are commitments in the form of commercial loans and unsecured overdrafts or accounts overdrafts covering all counterparty segments.

The solvency of such counterparties is monitored annually through the provision and analysis of the annual financial statements, and, if necessary, through the provision of interim financial statements or other useful information enabling an appropriate monitoring of the development of the financial condition of the counterparty at periodic intervals. The underlying analysis carried out with this information may lead to the identification of a deterioration in the counterparty risk, respectively credit risk. The risk assessment may therefore lead to restructuring or reorganisation measures being defined, with individual value adjustments being issued at the same time if the credit exposure is considered impaired.

- **Determination of the need for individual value adjustments for credit default**
- **Identification of credit default risks**

Overdue receivables

Overdue receivables are valued and monitored separately. Overdue receivables are receivables with contractually agreed payments of interest (including accrued interest), associated commissions and/or depreciation that are more than 90 days overdue and unpaid.

General monitoring of credit commitments

The general monitoring of credit commitments is organised and performed according to the nature of the counterparty and of the guarantees and other contractual credit clauses, using appropriate instruments and measures at appropriate intervals corresponding to the inherent or actual risks.

Determination of individual value adjustments for credit default risks relating to impaired receivables

Individual value adjustments are made and booked on a quarterly basis to prevent the risk of default on impaired receivables.

Any impaired receivables, that is, those resulting from a situation in which it is unlikely that the counterparty will be able to meet its future obligations, are valued at the liquidation value of the collateral. Any resulting decrease in value is covered by individual value adjustments. This

impairment is measured by the difference between the value of the receivable and the amount that is likely to be recoverable, taking into account counterparty risk and the net proceeds from realising contingent collateral. The value of the receivable corresponds either to the credit limit or to the amount of credit used. The likely recoverable amount of the collateral, i.e. the liquidation value, is the alienation value that can potentially be realised after deducting the expected holding and liquidation costs. This approach is applied to the entire credit commitment of an individual counterparty or a group of related counterparties forming an economic group in order to take into account the whole perimeter with credit default risk.

Counterparties at risk, or risk positions, that are known and identified as such, are revalued four times a year. In addition to the review of the appropriate level of individual value adjustments, the strategy and related measures are reviewed. The Credit Risk Management organisational unit evaluates all individual value adjustments on risk positions and submits them to the Credit Committee, the decision-making body, for approval.

The Bank reviews the creditworthiness of the counterparties using risk models and rating models specific to the various client segments in order to determine the probabilities of default. The Bank applies the CreditMaster expert rating system of RSN Risk Solution Network AG. The Bank measures the creditworthiness of counterparties based on a 12-class ratings scale which is structured into three risk sub-categories:

- Actual risk-free counterparty in rating classes 01 to 08: no individual value adjustments are created on the receivables of such counterparties.
- Heavily supervised counterparty in rating class 09: no individual value adjustments are created on the receivables of such counterparties.
- Actual risk counterparty in rating classes 10 to 12 and subject to individual value adjustments. Counterparties in rating class 12 are in fact in actual or selective default and may, as the case may be, not require the booking of individual value adjustments.

Impaired receivables are again classified at their full value on the balance sheet when the principal and interest due and outstanding are paid according to contractual provisions and other credit-worthiness criteria are met.

- **Determination of individual value adjustments for inherent risks of default relating to non-impaired loans/receivables**

Non-impaired receivables arise from situations where it is likely that the debtor will be able to meet its future commitments.

As a category 3 bank in accordance with Appendix 3 OB, the Bank is obliged under Article 25 para. 1 letter b of the Ordinance on the Swiss Financial Market Supervisory Authority

(FINMA) to make value adjustments for inherent risks of default on non-impaired receivables.

Inherent risks of default result from risks present on the balance sheet date in an apparently healthy loan portfolio, which will only be realized later.

Accordingly, the inherent default risks of non-impaired loans, i.e. loans classified in rating categories 1 to 9, are also subject to value adjustments according to an internal model.

The internal model is based on the following components:

- a value adjustment rate (risk factor) expressed in percent and applied to the volume of each rating class concerned
- annual change in real estate prices expressed in percent according to the transaction price index for condominiums and villas issued by Wüest & Partner SA
- annual variation of the gross domestic product of the canton of Fribourg expressed in percentages according to the data of the statistics service of the Canton of Fribourg (SStat).

All receivables from banks, customers and public sector entities, as well as debt securities held to maturity, are included in the balance sheet or off-balance sheet. The risk factors are valid for the entire current accounting period. They are reviewed annually by the FINA division and adjusted if necessary. Annual changes in the components of the internal model are taken into account in the analysis.

Changes in the risk factors used to determine the value adjustments for inherent default risks are disclosed, where applicable, in these notes to the annual financial statements, respectively in the notes to the half-yearly financial statements.

Since 2015, the adjustment rates applied to each rating class have remained unchanged. The elements taken into account in their annual review have not led to any adjustments.

The use of the value adjustment for inherent risks of default may occur in the event of a sudden and significant loss on an unimpaired position. The amount used must be reconstituted within a maximum of five years, in accordance with article 25 paragraph 7 of the OEPC.

This replenishment period will also apply if the value adjustment for inherent risks is used to create individual value adjustments for impaired loans.

Any shortfall in this respect, i.e. the difference between the amount of the adjustment actually made and the amount calculated according to the internal method, is disclosed in the annual report in accordance with Article 25 para. 8 of the Swiss Federal Law on Insurance.

As of 31 December 2024, the need for value adjustments for inherent risks is fully covered.



Market risks

Market risks represent the potential for losses due to fluctuations in exchange rates, interest rates, securities prices and indices on all positions held by the Bank.

Interest rate risk

Interest rate risk arises from mismatches between the size and terms (rate-setting maturities) of the Bank's asset and liability balance sheet positions. For variable positions (variable-rate mortgages, savings and current accounts), models are used to replicate as closely as possible the pace and magnitude of changes in client rates in response to changes in market rates. Movements in the market yield curve, and the resulting changes in client behaviour, are the source of interest rate risk. These changes directly affect interest income and the present value of the Bank's equity.

Through its "Asset and Liability Management" (ALM) Committee, the Bank monitors various indicators relating to interest rate risk on the balance sheet:

Static indicators. The Bank calculates the duration of equity capital on a monthly basis, as well as the sensitivity of the value of equity capital to an interest rate shock.

Dynamic indicators. The Bank establishes quarterly interest rate and business scenarios combined with a refinancing/hedging strategy.

These dynamic simulations take into account the behavior of clients according to the interest rate scenarios and make it possible to simulate the interest margin, the duration of equity capital and the economic value of equity capital over different periods. In order to measure, assess, limit and manage this risk, a management and monitoring policy has been put in place by the ALM Committee. Risk tolerances are approved annually by the BoD.

The Bank uses derivative financial instruments (IRS) as part of its asset and liability management activities, mainly to manage its exposure to interest rate risk. These transactions are recorded as "Micro Hedges" and thus only their net interest flow impacts the income statement under «Interest and discount income». No ineffectiveness was observed at December 31, 2024.

Operational management of interest rate risk is carried out by the ALMT structural unit.

Other market risks

Other market risks, including foreign exchange risk and security price fluctuation risk, are constantly monitored within the limits set. The majority of the Bank's transactions are customer transactions. In principle, these transactions are carried forward to the market to cover the risk of losses. The residual exchange risk on foreign currency positions is thus limited.

Liquidity risks

Liquidity risk is the risk that the Bank will not have sufficient resources to meet its commitments at all times and on a continuous basis.

The Bank, through its "Asset and Liability Management" (ALM) Committee, monitors its exposure to liquidity risk by producing schedules of outstanding balance sheet items and by calculating balance sheet structure ratios. It also develops stress scenarios and carries out dynamic simulations of the future balance sheet structure. Using leading indicators, the Bank anticipates the occurrence and impact of potential crises and has drawn up a plan of measures for this purpose. These simulations enable the Bank to define its refinancing program on the capital market.

It thus complies with the quantitative and qualitative requirements of FINMA circular 2015/2.

Operational liquidity risk management is carried out by the ALMT structural unit.

Operational risks

Operational risks are defined as risks that the Bank does not actively incur. In doing so, the Bank has defined a method for managing operational risks and dedicated control approaches for certain specific diversities, particularly the key risks managed by Compliance, which are set out below. The overall concept of operational risk management used by the Bank is based on the best practice formulated by the Basel Committee and is in line with FINMA Circular 2023/1 on operational risks and resilience.

Operational risk management aims to control operational risk drivers by identifying areas for improvement and reinforcing operational and managerial control systems. In particular, the Bank aims to reduce its exposure:

- to a breach of the Bank's legal and regulatory requirements, standards or rules, including the possibility of an event of control risk (inadequate design of the control mechanism, implementation of the non-compliant control mechanism or lack of rigour in the application of the control mechanism);

- to inappropriate or malicious behaviour on the part of the actors, i.e. employees, suppliers, bank counterparties, clients or other external actors;
- to inappropriate characteristics of information systems (applications, interfaces and hardware) or other communication systems (telephony, fax, emails and social networks);
- to inadequate infrastructure;
- to an organisation – bringing together the concept (method, process, organisational chart) and the organisational framework (regulations, policies, directives and manuals) – which is inappropriate in relation to the Bank's activities;
- to natural hazards.

Reviews are conducted periodically to identify the main operational risks. They are supplemented by ad-hoc analyses, e.g. if new potential threats emerge, if FINMA requests it or if a significant risk event is detected at another bank. These reviews and analyses are conducted by the Management and professionals and seek to identify possible improvements to the risk management system, particularly operational and managerial controls.

In order to monitor the evolution of the operational risk profile, tolerance is expressed with regard to operational incidents in general and for each operational risk category. In the event of a significant operational risk event, the Bank bases its management of the incident on the application of clearly defined measures.

Operational risks are limited by an adequate organization and by the implementation of an appropriate and efficient internal control system (ICS) that respects the principle of separation of functions.

Risks in the compliance sector

FINMA defines compliance as «abiding by the relevant statutory, regulatory and internal rules and observing generally accepted market standards and codes of conduct». In this context, the Compliance function includes generalists from the global regulatory framework specializing in banking.

Compliance supports the Bank's governing bodies by ensuring compliance with due diligence obligations and standards to combat money laundering and terrorist financing, limiting reputational risks, and participating in meeting deadlines. This is the case in particular for the monitoring of new client relationships and transactions, the reporting of suspicious activity reports, the monitoring of market abuse as well as the implementation of economic sanctions. The Compliance function will thus ensure that the Bank offers assurance of proper business conduct, a sine qua non condition for maintaining the operating licence as a financial intermediary.

It also applies to limiting the occurrence of so-called compliance risks as part of the Risk Management function. These risks can take many forms, but can be broken down into BCF's risk of money laundering and terrorist financing, risk of cross-border activities, and the wider risk of non-compliance with the regulations.

Internal control system

The Bank's Internal Control System (ICS) contains all the control structures and processes ensuring the proper conduct of day-to-day business, adherence to legal, regulatory and internal provisions as well as the completeness and reliability of the reporting.

The framework conditions underpinning the ICS, which ensure its smooth operation, are defined at the level of the control environment, the elements of which include, in particular, internal regulations, independent control bodies, organisational charts and job profiles required. At the level of processes, there is a close intersection between processes, risks and controls. Risks are captured and evaluated for each process. On this basis, key controls are then defined, all of which are documented and recorded in the processes. In addition to key controls, there are numerous other risk mitigation measures.

The Risk Management unit conducts a review of the adequacy and effectiveness of the ICS at least once a year and monitors the implementation of the resulting improvement measures. The reporting relating to the ICS is established quarterly in the context of the Risk Committee.

Business Continuity Management

As part of Business Continuity Management (BCM), the Bank implemented comprehensive measures to maintain its operations even in the event of a failure of critical resources (personnel, IT system, buildings, suppliers). A number of strategic options have been identified for specialised sectors so that they can maintain the functioning of key business processes.

All of the core IT systems were set up and implemented redundantly at several locations. In order to limit the damage as much as possible and to enable an effective and coordinated response by the Management, the Bank has prepared emergency plans. Regular tests and exercises are conducted to verify that the plans and organisation are up-to-date and operational. In order to guarantee their ability to ensure business continuity, the crisis unit and the organisation are regularly trained and tested using several scenarios. This procedure has proven successful in cushioning the impact of the pandemic and confirms the soundness of the BCM.

Data protection

The processing of customer data and the related security are handled in strict compliance with data protection legislation and FINMA circular 2023/1 "Operational risks and resilience – banks". Governance, as well as technical, organisational and infrastructural measures have been put in place to ensure optimal security of client data. These measures are active 24/7. In addition, employees are regularly made aware of the importance of complying with the standards and measures, through awareness campaigns and training, which are also addressed to interested customers. With regard to cybersecurity in particular, the effectiveness of the system is regularly reassessed and its resistance to cyberattacks tested.

In addition, the Bank relies on specialised information sources. In particular, it monitors the following categories of cyberattacks in collaboration with its service providers: malware attacks and phishing, cyber espionage, sophisticated cybercrime, denial of service attacks (DoS or DDoS), social engineering and unauthorised access. For each category of threat, measures have been defined to identify threats specific to the Bank, protect critical assets, and detect and respond to cyberattacks. Crisis governance and related exercises complement the protective measures in place to ensure that the Bank's operations can be reasonably maintained in the event of an attack.



Information relating to the balance sheet

Breakdown of securities financing transactions (assets and liabilities)

(in thousand CHF)

| | Reporting year | Previous year |
|--|----------------|---------------|
| Book value of claims arising from cash collateral pledged in connection with securities borrowing or reverse repurchase agreements* | 0 | 0 |
| Book value of liabilities arising from cash collateral received in connection with securities lending or repurchase agreements* | 0 | 0 |
| Book value of securities held for own account, lent or transferred as collateral in connection with securities borrowing or repurchase agreements | | |
| - Of which those that can be sold or repledged without restriction | | |
| Fair value of securities received as collateral in connection with securities lending and those received in connection with securities borrowing and under reverse repurchase agreements, which can be sold or repledged without restriction | 0 | 0 |
| - Of which securities repledges as collateral | 0 | 0 |
| - Of which sold securities | | |

* Before netting agreements

Catherine Nieva, Marylaure Baechler and Sophie Bonvin, in charge of the reception concept and the meeting rooms layout



Risk mitigants for loans and off-balance-sheet transactions

Impaired loans

(in thousand CHF)

| | Type of risk mitigant | | | Total |
|---|-----------------------|---------|-----------|------------|
| | Mortgage | Others | Unsecured | |
| Loans (before impairment charges/reversals) | | | | |
| Amounts due from customers | 688,720 | 747,257 | 2,342,940 | 3,778,917 |
| Mortgages | 19,929,492 | | 10,039 | 19,939,531 |
| - Residential real estate | 16,091,480 | | | 16,091,480 |
| - Office and business premises | 1,448,289 | | | 1,448,289 |
| - Commercial and industrial property | 1,099,362 | | | 1,099,362 |
| - Other | 1,290,362 | | | 1,290,362 |
| Loans (before impairment charges/reversals) | | | | |
| Reporting year | 20,618,212 | 747,257 | 2,352,979 | 23,718,448 |
| Previous year | 19,793,806 | 823,812 | 2,257,617 | 22,875,234 |
| Loans (after impairment charges/reversals) | | | | |
| Reporting year | 20,514,538 | 642,513 | 2,352,979 | 23,510,029 |
| Previous year | 19,698,047 | 718,880 | 2,257,617 | 22,674,544 |
| Off-balance-sheet transactions | | | | |
| Contingent liabilities | 13,830 | 26,502 | 173,901 | 214,233 |
| Irrevocable commitments | | | 191,011 | 191,011 |
| Commitments relating to calls on shares and other equity securities | | | 48,552 | 48,552 |
| Confirmed credits | | | | |
| Off-balance-sheet transactions | | | | |
| Reporting year | 13,830 | 26,502 | 413,464 | 453,797 |
| Previous year | 14,220 | 14,267 | 458,594 | 487,081 |

Impaired loans

(in thousand CHF)

| | Gross receivables | Realization value of risk mitigants* | Net receivables | Individual impairment charge/reversal |
|----------------|-------------------|--------------------------------------|-----------------|---------------------------------------|
| Reporting year | 433,593 | 320,117 | 113,476 | 117,998 |
| Previous year | 431,183 | 323,088 | 108,095 | 112,333 |

* Debt/realisation value per client: the lower of the two amounts is taken into account. The BCF determines the individual value adjustments on the basis of the credit limits granted, the total positions of the clients concerned and the impaired interests. The individual value adjustments therefore exceed the net amount of impaired loans.

Trading portfolio assets and liabilities / other financial assets and liabilities at fair value

(in thousand CHF)

| | Reporting year | Previous year |
|---|----------------|---------------|
| Assets | | |
| Trading portfolio assets | 8,915 | 4,478 |
| Debt securities | 755 | |
| - Of which listed on a recognised stock exchange | 755 | |
| Equity securities | 7,484 | 3,206 |
| Commodities and precious metals | 677 | 780 |
| Other | | 492 |
| Total | 8,915 | 4,478 |
| - Of which determined using a valuation model | | |
| - Of which securities eligible for repurchase agreements in accordance with liquidity regulations | | |

No passive transactions as of 31 December 2024.

Working session for the work follow-up at BCF headquarters



Derivative financial instruments (assets and liabilities)

(in thousand CHF)

| | Trading instruments | | | Hedging instruments | | |
|---|----------------------------|----------------------------|---------------------------|----------------------------|----------------------------|---------------------------|
| | Positive replacement value | Negative replacement value | Value of underlying asset | Positive replacement value | Negative replacement value | Value of underlying asset |
| Interest-rate instruments | | | | | | |
| - Swaps | | | | 17,770 | 56,409 | 3,303,620 |
| Foreign currencies and precious metals | | | | | | |
| - Forward contracts and swaps | 573 | 479 | 83,722 | | | |
| Equity securities / indices | | | | | | |
| - Options (exchange traded) | | | | | | |
| Total before netting agreements: | | | | | | |
| Reporting year | 573 | 479 | 83,722 | 17,770 | 56,409 | 3,303,620 |
| - Of which determined using a valuation model | | | | 17,770 | 56,409 | 3,303,620 |
| Previous year | 3,029 | 2,855 | 157,833 | 56,331 | 46,988 | 3,000,000 |
| - Of which determined using a valuation model | | | | 56,331 | 46,988 | 3,000,000 |
| Total after netting agreements: | Positive replacement value | | | Negative replacement value | | |
| Reporting year | 18,343 | | | 56,889 | | |
| Previous year | 59,360 | | | 49,842 | | |

Breakdown by counterparty:

| | Central clearing houses | Banks and securities dealers | Other clients |
|--|-------------------------|------------------------------|---------------|
| Positive replacement value (after netting agreements) | | 18,024 | 318 |

Financial investments

(in thousand CHF)

| | Book value | | Fair value | |
|---|------------------|------------------|------------------|------------------|
| | Reporting year | Previous year | Reporting year | Previous year |
| Debt securities | 1,185,690 | 1,207,748 | 1,182,374 | 1,166,258 |
| - Of which securities intended to be held until maturity | 1,185,690 | 1,207,748 | 1,182,374 | 1,166,258 |
| - Of which securities available for sale | | | | |
| Equity securities | 226,383 | 228,179 | 247,501 | 246,903 |
| - Of which significant participations (minimum of 10% of capital or voting rights) | | | | |
| Precious metals | 780 | 780 | 5,952 | 9,169 |
| Real estate | 12,749 | 24,868 | 12,749 | 24,868 |
| Total | 1,425,603 | 1,461,574 | 1,448,576 | 1,447,198 |
| - Including securities eligible for repurchase agreements in accordance with liquidity regulations | 987,702 | 1,009,203 | | |

Counterparty breakdown

(in thousand CHF)

| | Best quality | High quality | Average quality | Speculative | In default | not rated |
|------------------------------------|--------------|--------------|-----------------|-------------|------------|-----------|
| Debt securities: book value | 1,038,136 | 112,454 | 29,168 | 5,933 | | |

Participations

(in thousand CHF)

| | Reporting year | | | | | | | | | |
|----------------------|----------------|---|------------------------|----------------------|-------------|-------------|-----------------------------|---|------------------------|--------------|
| | Cost | Accumulated depreciation and write-offs | Book value at year-end | Change in allocation | Investments | Divestments | Depreciation and write-offs | Value adjustments in case of equity method / reversal of depreciation | Book value at year-end | Market value |
| Other participations | | | | | | | | | | |
| - Listed | | | | | | | | | | |
| - Unlisted | 90,473 | 24,794 | 65,680 | | 32,560 | | -18,753 | | 79,487 | |
| Participations total | 90,473 | 24,794 | 65,680 | | 32,560 | | -18,753 | | 79,487 | |

Companies in which the bank has a significant long-term direct or indirect holding

(in thousand CHF)

| Company name and headquarters | Main business | Capital (in 1'000) | % of share capital held | % of voting rights held | % of stake held directly | % of stake held indirectly |
|--|--------------------|-----------------------|----------------------------|----------------------------|-----------------------------|-------------------------------|
| Investissements Fonciers SA, Lausanne | Fund management | 1,000 | 28,6 | 28,6 | 28,6 | 0 |
| Capital Risque Fribourg SA, Fribourg | Investment company | 12,000 | 31,6 | 31,6 | 31,6 | 0 |
| EdgEvooq Holding SA, Fribourg | Investment company | 684 | 48,7 | 46,0 | 48,7 | 0 |
| BCF SICAV in liquidation, Fribourg | Real estate funds | 500 | 100,0 | 100,0 | 100,0 | 0 |

BCF does not prepare consolidated financial statements, as the requirements in this respect are not met.

The theoretical value of investments in which the Bank could nevertheless exercise significant influence, according to the equity method, amounts to CHF 67.638 million, compared with CHF 67.061 million at book value. The difference in value of CHF 0.577 million would therefore have a positive impact on the Bank's earnings. Participations of an economic support or sponsorship nature, irrespective of the percentage held, whose liquidation value is non-material, are valued at CHF 1 on the balance sheet.

Tangible fixed assets

(in thousand CHF)

| | Reporting year | | | | | | |
|--|----------------------|---|--|--------------------------|---------------|-------------|---------------------------|
| | Acquisition value | Accumulated depreciation and write-offs | Book value at end of pre- vious year | Changes in allocation | Investments | Divestments | Book value at year-end |
| Bank premises | 179,621 | -120,520 | 59,100 | 672 | 7,282 | | 63,992 |
| Other real estate | 16,576 | -12,281 | 4,295 | -98 | 0 | | 4,075 |
| Computer programs separately acquired or internally developed | 15,484 | -6,457 | 9,027 | | 6,170 | | 11,519 |
| Other tangible fixed assets | 6,541 | -4,504 | 2,037 | -573 | 434 | | 1,045 |
| Tangible fixed assets | 218,221 | -143,762 | 74,459 | | 13,886 | | 80,630 |

Other assets and liabilities

(in thousand CHF)

| | Other assets | | Other liabilities | |
|---|-------------------|------------------|-------------------|------------------|
| | Reporting year | Previous year | Reporting year | Previous year |
| Offset accounts | 38,546 | | | 9,520 |
| Order accounts | 4,738 | 3,333 | 7,179 | 2,567 |
| Balances arising from internal bank business operations | 257 | | | |
| Coupons / coupons and securities due | | | 16 | 462 |
| Indirect taxes | 2,940 | 2,260 | 13,188 | 8,592 |
| Total | 46,481 | 5,593 | 20,383 | 21,140 |

Assets pledged or assigned as collateral for own liabilities*

(in thousand CHF)

| | Amount or book value of pledge | Real liability |
|---|--------------------------------|----------------|
| Total assets pledged or assigned | | |
| BNS guarantee account covering irrevocable commitments towards esisuisse | 41,738 | 83,476 |
| Mortgage-backed securities to cover claims pledged to the Pfandbriefzentrale Schweizer Kantonalbanken | 4,629,000 | 6,262,531 |
| Securities deposited as collateral for SNB Lombard loan | 58,293 | 0 |
| Other pledged assets with counterparties for margin calls on derivative financial products | 45,185 | 39,213 |

* Without securities financing transactions (see separate breakdown of related transactions on page 68).

Commitments relating to own occupation pension funds as well as shares held by own occupational pension funds

(in thousand CHF)

| | Reporting year | Previous year |
|---|----------------|---------------|
| Amounts due in respect of client deposits | 23,776 | 57,461 |
| Cash bonds | 1,500 | 3,000 |
| Total | 25,276 | 60,461 |

Economic situation of own occupational pension funds

(in thousand CHF)

| Economic benefit/liability and pension expenses | Economic share of the bank / financial group | | Change in the economic share compared to the previous year (economic benefit / commitment) | Contributions paid for reporting year | Pension costs in personnel expenses | |
|---|--|----------------|--|---------------------------------------|-------------------------------------|---------------|
| | Surplus / deficit at reporting year end | Reporting year | | | Reporting year | Previous year |
| Pension plans with no surplus or shortfall | | | | 9,683 | 9,683 | 8,863 |

The assessment is based on the annual financial statements of the pension fund as at 31/12/2023. As of 31/12/2023, the coverage ratio of the Pension Fund is over 100%. Further information is provided on page 57 under "Pension liabilities".

Outstanding bonds

(in thousand CHF)

| Year of issue | Rate in % | Reimbursement | Nominal value |
|-----------------------------|-----------|---------------|------------------|
| 2015 | 0.550 | 03/02/2025 | 350,000 |
| 2018 | 0.200 | 20/02/2026 | 200,000 |
| 2023 | 1.900 | 08/09/2026 | 150,000 |
| 2017 | 0.300 | 17/02/2027 | 200,000 |
| 2015 | 0.600 | 09/04/2027 | 150,000 |
| 2012 | 1.450 | 07/06/2027 | 175,000 |
| 2019 | 0.500 | 23/02/2028 | 260,000 |
| 2024 | 0.8125 | 05/12/2028 | 150,000 |
| 2019 | 0.250 | 24/05/2029 | 200,000 |
| 2020 | 0.000 | 26/02/2030 | 200,000 |
| 2020 | 0.140 | 12/06/2030 | 165,000 |
| 2021 | 0.000 | 05/02/2031 | 240,000 |
| 2024 | 1.100 | 09/09/2031 | 100,000 |
| 2022 | 0.3126 | 02/02/2032 | 140,000 |
| 2019 | 0.100 | 01/11/2044 | 255,000 |
| Total reporting year | | | 2,935,000 |
| Total previous year | | | 2,835,000 |

None of the bonds issued by BCF can be called in for redemption before the maturity date.

Bonds and mortgage-backed bonds

(in thousand CHF)

| | |
|-----------------------------|------------------|
| Total reporting year | 4,629,000 |
| Total previous year | 4,472,000 |

Provisions, reserves for general banking risks and variation during reporting year

(in thousand CHF)

| | Status at end of previous year | Used as allocated | Changes in scope | Currency translation differences | Recoveries, overdue interest | New provisions changed to income statement | Releases credited to income statement | Status at end of reporting year |
|--|--------------------------------|-------------------|------------------|----------------------------------|------------------------------|--|---------------------------------------|---------------------------------|
| Provisions for credit risks | 9,316 | -16 | -5,610 | | | 1,641 | | 5,332 |
| Provisions for other operating risks | 100 | | | | | | | 100 |
| Other provisions | 9,650 | -1,220 | | | | | -2,089 | 6,341 |
| Total provisions | 19,066 | -1,235 | -5,610 | | | 1,641 | -2,089 | 11,773 |
| Reserves for general banking risks | 719,000 | | | | | 63,000 | | 782,000 |
| Provisions for credit risk and country risk | 201,574 | -7,953 | 5,610 | | | 15,608 | | 214,839 |
| - Of which provisions for impaired loans | 112,333 | -7,953 | 5,610 | | | 8,008 | | 117,998 |
| - Of which provisions for non-impaired loans | 89,241 | | | | | 7,600 | | 96,841 |

Share capital

(in thousand CHF)

| | Reporting year | Previous year |
|-------------------|----------------|---------------|
| Endowment capital | 70,000 | 70,000 |

The endowment capital is made available in its entirety by the Canton of Fribourg, in accordance with the law on the Banque Cantonale de Fribourg.

Receivables and commitments with respect to related parties

(in CHF thousands)

| | Receivable | | Commitment | |
|---------------------------|----------------|---------------|----------------|---------------|
| | Reporting year | Previous year | Reporting year | Previous year |
| Significant shareholder * | 149,000 | 94,500 | 390,292 | 540,396 |
| Affiliated companies * | 260,043 | 279,039 | 92,539 | 97,619 |
| Governing cases ** | 26,045 | 22,180 | 12,463 | 10,554 |
| Other related parties * | | | 25,276 | 60,461 |

Receivables and commitments with respect to related parties

(in thousand CHF)

| | Receivable | | Commitment | |
|------------------------|----------------|------------------|----------------|------------------|
| | Reporting year | Année précédente | Reporting year | Année précédente |
| Affiliated companies * | | | 1,503 | 748 |
| Governing cases ** | | | 21 | 16 |

* Transactions were granted on the terms for customers.

** Transactions with members of the Board of Directors and with members of the Executive Board were granted on the standard terms for customers, respectively on those on the standard terms for BCF employees.

Maturity structure of financial instruments

(in thousand CHF)

| | | Maturity | | | | | | | |
|--|----------------|-----------|-----------|----------------|----------------|----------------------|--------------|--------------|------------|
| | | Sight | Callable | up to 3 months | 3 to 12 months | 12 months to 5 years | Over 5 years | Fixed assets | Total |
| Assets / Financial instruments | | | | | | | | | |
| Cash and cash equivalents | | 3,321,377 | 41,738 | | | | | | 3,363,115 |
| Receivables from banks | | 79,467 | | 49,683 | | | | | 129,150 |
| Amounts due from securities financing transactions | | | | | | | | | 0 |
| Amounts due from customers | | 6,533 | 909,279 | 664,261 | 219,676 | 1,284,163 | 593,901 | | 3,677,813 |
| Mortgage loans | | 8,515 | 3,028,114 | 1,143,025 | 1,639,342 | 9,240,503 | 4,772,717 | | 19,832,216 |
| Trading portfolio assets | | 8,915 | | | | | | | 8,915 |
| Positive replacement value of derivative financial instruments | | 18,343 | | | | | | | 18,343 |
| Financial investments | | 292,837 | | 26,993 | 171,916 | 388,560 | 532,549 | 12,749 | 1,425,603 |
| Total | Reporting year | 3,735,989 | 3,979,131 | 1,883,962 | 2,030,934 | 10,913,225 | 5,899,166 | 12,749 | 28,455,156 |
| Total | Previous year | 3,780,485 | 3,733,416 | 1,474,463 | 2,069,064 | 10,376,509 | 6,312,249 | 24,868 | 27,771,054 |
| Foreign funds / Financial instruments | | | | | | | | | |
| Due to banks | | 24,199 | | | 55,000 | 707,000 | 455,000 | | 1,241,199 |
| Repurchase agreements | | | | | | | | | |
| Amounts due in respect of client deposits | | 3,606,514 | 8,060,500 | 1,576,294 | 1,452,519 | 1,350,000 | 509,000 | | 16,554,827 |
| Negative replacement value of derivative financial instruments | | 56,889 | | | | | | | 56,889 |
| Cash bonds | | | | 13,896 | 96,687 | 266,016 | 51,910 | | 428,509 |
| Bonds and mortgage-backed bonds | | | | 353,000 | 200,000 | 3,793,000 | 3,218,000 | | 7,564,000 |
| Total | Reporting year | 3,687,601 | 8,060,500 | 1,943,190 | 1,804,206 | 6,116,016 | 4,233,910 | | 25,845,424 |
| Total | Previous year | 3,589,642 | 7,993,052 | 1,402,594 | 1,547,102 | 6,054,065 | 4,665,639 | | 25,252,095 |

Notes to off-balance-sheet transactions and to income statement

Contingent liabilities

(in thousand CHF)

| | Reporting year | Previous year |
|-------------------------------------|----------------|----------------|
| Credit hedging commitments | 78,525 | 779 |
| Performance guarantees and similar | 104,379 | 212,535 |
| Other contingent liabilities | 31,329 | |
| Total contingent liabilities | 214,233 | 213,315 |

Fiduciary transactions

(in thousand CHF)

| | Reporting year | Previous year |
|---|----------------|---------------|
| Fiduciary investments with third parties | 0 | 0 |

Net trading income

(in thousand CHF)

| | Reporting year | Previous year |
|--|----------------|---------------|
| Securities transactions / realised and unrealised income | 308 | -8 |
| Currencies | 11,098 | 10,731 |
| Precious metals | 343 | 175 |
| Net trading income | 11,748 | 10,898 |

Disclosure of significant refinancing income under interest and discount income and significant negative interest

(in thousand CHF)

| | Reporting year | Previous year |
|---|----------------|---------------|
| Negative interest | | |
| Negative interest on active operations (reduction of interest income) | 0 | -2 |
| Negative interest on passive operations (reduction of interest expenses) | 0 | 0 |

Personnel costs

(in thousand CHF)

| | Reporting year | Previous year |
|---|----------------|---------------|
| Fixed and variable compensation | 59,631 | 54,738 |
| Employee benefits / Contribution to staff pension funds | 20,350 | 24,078 |
| Other personnel expenses | 2,887 | 2,571 |
| Total personnel costs | 82,869 | 81,388 |

Other operating expenses

(in thousand CHF)

| | Reporting year | Previous year |
|--|----------------|---------------|
| Premises | 5,157 | 5,384 |
| IT and communication costs | 24,403 | 21,836 |
| Machinery, furniture and vehicles costs | 183 | 323 |
| Auditor fees | 399 | 372 |
| - Of which for financial and prudential audits | 370 | 368 |
| - Of which for other services | 29 | 4 |
| Other operating expenses | 18,571 | 17,358 |
| Total other operating expenses | 48,713 | 45,272 |

Comments on significant losses and extraordinary income

(in thousand CHF)

| | Reporting year | Previous year |
|-------------------------------|----------------|---------------|
| Extraordinary income | 0 | 0 |
| Extraordinary expenses | 0 | 0 |

Taxes and payments to Fribourg communities

(in thousand CHF)

| | Reporting year | Previous year |
|---|----------------|---------------|
| Payments to Fribourg communities | | |
| Cantonal, municipal and parish taxes | 9,867 | 10,762 |
| Compensation for cantonal guarantee | 30,000 | 44,500 |
| Remuneration of the endowment capital | 48,000 | 11,000 |
| Extraordinary payment to the State | 20,000 | 19,500 |
| Total | 107,867 | 85,762 |
| Weighted average tax rate * | 45.60% | 38.24% |
| Tax payment details | | |
| Cantonal taxes | 5,278 | 5,764 |
| Municipal taxes | 4,057 | 4,508 |
| Parish taxes | 532 | 490 |
| Total paid taxes | 9,867 | 10,762 |
| Weighted average tax rate * | 4.17% | 4.80% |

* Based on operating profit







Ernst & Young Ltd
Place de Pont-Rouge 1
P.O. Box 1575
CH-1211 Geneva 26

Phone: +41 58 286 56 56
www.ey.com/en_ch

To the Grand Council of the Canton of Fribourg
of **Banque Cantonale de Fribourg, Fribourg**

Geneva, 21 March 2025
except as to income statement, as to which the date is 16 June 2025

Report of the statutory auditor

Report on the audit of the financial statements



Opinion

We have audited the financial statements of Banque Cantonale de Fribourg (the Company), which comprise the statement of financial position as at 31 December 2024, the statement of income, and the statement of changes in equity and the statement of cash flows for the year then ended, and notes to the financial statements, including a summary of significant accounting policies.

In our opinion, the accompanying financial statements give a true and fair view of the financial position of the Company as at 31 December 2024 and of its financial performance and its cash flows for the year then ended in accordance with the applicable financial reporting framework for banks and comply with the Swiss law and law on Banque Cantonale de Fribourg.



Basis for opinion

We conducted our audit in accordance with Swiss law and Swiss Standards on Auditing (SA-CH). Our responsibilities under those provisions and standards are further described in the "Auditor's responsibilities for the audit of the financial statements" section of our report. We are independent of the Company in accordance with the provisions of Swiss law and the requirements of the Swiss audit profession, and we have fulfilled our other ethical responsibilities in accordance with these requirements.

We believe that the audit evidence we have obtained is sufficient and appropriate to provide a basis for our opinion.



Key audit matters

Key audit matters are those matters that, in our professional judgment, were of most significance in our audit of the financial statements of the current period. These matters were addressed in the context of our audit of the financial statements as a whole, and in forming our opinion thereon, and we do not provide a separate opinion on these matters. For each matter below, our description of how our audit addressed the matter is provided in that context.

We have fulfilled the responsibilities described in the "Auditor's responsibilities for the audit of the financial statements" section of our report, including in relation to these matters. Accordingly, our audit included the performance of procedures designed to respond to our assessment of the risks of material misstatement of the financial statements. The results of our audit procedures, including the procedures performed to address the matters below, provide the basis for our audit opinion on the financial statements.

Valuation of loans and advances to customers and mortgages

Risk Lending operations constitute the Bank's main activity. Their assessment is based on an internal control system set up by the Bank to limit and manage credit risks. All credit commitments require prior analysis and definition of a counterparty rating, which allows for an assessment of the credit risk on a scale of 1 to 12 (1 being the best credit rating and 12 the worst).

Subsequently, each receivable is subject to a periodic internal review at a frequency defined in the credit manual. Based on these ratings, overdue and non-performing loans are identified and are subject to a specific procedure.

The identification of risks and the evaluation of the corresponding value adjustments are thus based on ratings and analyses that involve a significant degree of judgment on the part of the Executive Board. Given the volume of loans granted, the assessment of customer loans and mortgages is considered a key element of the audit.

The procedures for monitoring and handling overdue and non-performing loans are set out on page 60 and following, as well as page 69 of the notes to the financial statements. The amounts of value adjustments are shown on page 75 of the notes to the financial statements.

Our audit response Our work consisted in assessing and testing the key controls relating to the granting (compliance with internal directives and validation competencies), recording, release and monitoring of loans, as well as the methodology for identifying default risk and assessing value adjustments.

In addition, we have performed detailed procedures which consisted in particular in:

- ▶ verifying, on the basis of a sample of overdue receivables, their correct treatment and recording in the accounts, as well as their validation by the competent authorities;
- ▶ verifying the correct treatment and accounting of interest on impaired receivables;
- ▶ verifying, based on a sample of impaired receivables, their correct treatment and accounting in the accounts, as well as their validation by the competent authorities;
- ▶ verifying the general IT controls relating, in particular, to the Finnova and CreditMaster IT systems;
- ▶ verifying, based on a sample of "non-impaired" loans, that there are no indications that the evaluation of the credits was not appropriate, and that the classification of the latter was erroneous.

Finally, we have audited the compliance with the accounting standards applicable to banks with regard to the valuation and presentation of advances to customers and mortgages in the financial statements.

Our audit procedures did not give rise to any reservations regarding the valuation of loans and advances to customers and mortgages.

Assessment of the latent risk of default

Risk The assessment of the latent risk of default on the non-impaired loan portfolio, respectively on receivables not covered by individual value adjustments, is also considered a key element of the financial audit because of the potential impact on the result and the margin of appreciation in defining the method to be applied.

The calculation corresponds to the provisioning based on an individual loss rate fixed for each of the first nine rating classes. The current rates are justified by the Bank by considering the evolution of its loan portfolio, the volume of new loans granted, the evolution of the real estate market and its risk analysis.



The amounts of these value adjustments are the subject of an internal procedure presented on page 60 and the amounts are presented on page 75 of the notes to the annual accounts.

Our audit response

We have performed the following procedures:

- ▶ verification of the determination of the amount of the value adjustments for latent risk;
- ▶ review of the loss rates applied to the rating classes and the underlying assumptions.

Our audit procedures did not give rise to any reservations regarding the assessment of the latent risk of default



Other information

The Board of Directors is responsible for the other information. The other information comprises the information included in the annual report but does not include the financial statements and our auditor's report thereon.

Our opinion on the financial statements does not cover the other information and we do not express any form of assurance conclusion thereon.

In connection with our audit of the financial statements, our responsibility is to read the other information and, in doing so, consider whether the other information is materially inconsistent with the financial statements or our knowledge obtained in the audit or otherwise appears to be materially misstated.

If, based on the work we have performed, we conclude that there is a material misstatement of this other information, we are required to report that fact. We have nothing to report in this regard.



Board of Directors' responsibilities for the financial statements

The Board of Directors is responsible for the preparation of the financial statements, which give a true and fair view in accordance with the applicable financial reporting framework for banks, with the Law on the Cantonal Bank of Fribourg, and for such internal control as the Board of Directors determines is necessary to enable the preparation of financial statements that are free from material misstatement, whether due to fraud or error.

In preparing the financial statements, the Board of Directors is responsible for assessing the Company's ability to continue as a going concern, disclosing, as applicable, matters related to going concern, and using the going concern basis of accounting unless the Board of Directors either intends to liquidate the Company or to cease operations, or has no realistic alternative but to do so.



Auditor's responsibilities for the audit of the financial statements

Our objectives are to obtain reasonable assurance about whether the financial statements as a whole are free from material misstatement, whether due to fraud or error, and to issue an auditor's report that includes our opinion. Reasonable assurance is a high level of assurance but is not a guarantee that an audit conducted in accordance with Swiss law and SA-CH will always detect a material misstatement when it exists.

Misstatements can arise from fraud or error and are considered material if, individually or in the aggregate, they could reasonably be expected to influence the economic decisions of users taken on the basis of these financial statements.

A further description of our responsibilities for the audit of the financial statements is located on EXPERTsuisse's website at: <https://www.expertsuisse.ch/en/audit-report>. This description forms an integral part of our report.



Report on other legal and regulatory requirements



In accordance with Art. 728a para. 1 item 3 CO and PS-CH 890, we confirm that an internal control system exists, which has been designed for the preparation of the financial statements according to the instructions of the Board of Directors.

Based on our audit in accordance with Art. 728a para. 1 item 2 CO, we confirm that the proposal of the Board of Directors complies with Swiss law and the Law on Banque Cantonale de Fribourg. We recommend that the financial statements submitted to you be approved.

Ernst & Young Ltd

A blue ink signature, appearing to be 'A. Schmid', written over a large, loopy blue oval.

Licensed audit expert
(Auditor in charge)

A blue ink signature, appearing to be 'S. Schmid', written over a large, loopy blue oval.

Licensed audit expert

Equity and liquidity as of 31 December 2024

Key regulatory figures

(in thousand CHF)

| | 31/12/2024 | 30/06/2024 | 31/12/2023 |
|--|------------|------------|------------|
| Equity taken into account (CHF) | | | |
| 1 Common equity tier 1 (CET1) | 2,627,821 | 2,499,146 | 2,499,146 |
| 2 Tier 1 Capital (T1) | 2,627,821 | 2,499,146 | 2,499,146 |
| 3 Total equity | 2,633,153 | 2,510,091 | 2,508,462 |
| Risk-weighted assets (RWA) (CHF) | | | |
| 4 RWA | 13,878,975 | 13,700,366 | 13,309,961 |
| 4a Tier 1 Capital (T1) | 1,110,318 | 1,096,029 | 1,064,797 |
| Risk-based capital ratios (as % of RWA) | | | |
| 5 CET1 Ratio (%) | 18.93% | 18.24% | 18.78% |
| 6 Core capital ratio (%) | 18.93% | 18.24% | 18.78% |
| 7 Total capital ratio (%) | 18.97% | 18.32% | 18.85% |
| CET1 requirements (as a % of RWA) | | | |
| 8 Capital adequacy ratio according to the Basel minimum standard | 2.50% | 2.50% | 2.50% |
| 9 Countercyclical capital buffer (Art. 44a OFR) according to the Basel minimum standard | 0.00% | 0.00% | 0.00% |
| 10 Additional capital buffer under international or national systemic risk (%) | 0.00% | 0.00% | 0.00% |
| 11 Total requirements of the Basel minimum standard, in CET1 quality (%) | 2.50% | 2.50% | 2.50% |
| 12 CET1 available to cover buffer requirements according to the Basel minimum standard (after deducting CET1 allocated to cover minimum requirements and, if applicable, to cover TLAC requirements) (%) | 10.97% | 10.32% | 10.85% |
| Target capital ratios according to Appendix 8 of the OFR (in % of RWA) | | | |
| 12a Equity ratio according to Appendix 8 OFR (%) | 4.00% | 4.00% | 4.00% |
| 12b Countercyclical capital buffer (Art. 44 and 44a OFR) (%) | 1.13% | 1.12% | 1.14% |
| 12c CET1 target ratio (in %) according to Appendix 8 of the OFR increased by the countercyclical buffers according to Articles 44 and 44a OFR | 8.93% | 8.92% | 8.94% |
| 12d T1 target ratio (in %) according to Appendix 8 of the OFR increased by the countercyclical buffers according to Articles 44 and 44a OFR | 10.73% | 10.72% | 10.74% |
| 12e Overall equity ratio target (in %) according to Appendix 8 of the OFR increased by the countercyclical buffers according to Articles 44 and 44a OFR | 13.13% | 13.12% | 13.14% |
| Basel III leverage ratio | | | |
| 13 Global commitment (CHF) | 29,173,698 | 29,114,287 | 28,379,130 |
| 14 Basel III leverage ratio (core capital as % of total commitment) | 9.01% | 8.58% | 8.81% |
| Liquidity ratio (LCR) | | | |
| 15 LCR numerator: sum of high quality liquid assets (CHF) | 3,883,684 | 4,534,538 | 4,129,627 |
| 16 LCR denominator: net cash outflow (CHF) | 1,959,892 | 1,909,801 | 1,822,713 |
| 17 Liquidity ratio, LCR (in %) | 198% | 237% | 227% |
| Funding ratio (NSFR) | | | |
| 18 Stable available refinancing (in CHF) | 24,749,338 | 24,625,857 | 24,434,356 |
| 19 Stable refinancing required (in CHF) | 18,873,448 | 18,726,080 | 18,449,554 |
| 20 Funding ratio, NSFR (in %) | 131% | 132% | 132% |

Overview of risk-weighted assets (RWA)

(in thousand CHF)

| | RWA 31/12/2024 | RWA 30/06/2024 | Minimum equity 31/12/2024 |
|--|-------------------|-------------------|---------------------------------|
| 1 Credit risk (without CCR - counterparty credit risk) | 12,879,354 | 12,732,518 | 1,030,348 |
| 2 Of which determined by the standard approach (SA) | 12,879,354 | 12,732,518 | 1,030,348 |
| 6 Counterparty credit risk CCR | 4,698 | 4,502 | 376 |
| 7b Of which determined by the market value method | 4,698 | 4,502 | 376 |
| 10 Risk of change in value of derivatives (CVA) | 5,649 | 5,552 | 452 |
| 13 Investments in collectively managed investments - mandate-based approach | 187,553 | 191,162 | 15,004 |
| 14 Investments in pooled investments - fallback approach | 91,262 | 90,843 | 7,301 |
| 20 Market risk | 6,574 | 7,336 | 526 |
| 21 Of which determined according to the standard approach | 6,574 | 7,336 | 526 |
| 24 Operational risk | 703,886 | 668,453 | 56,311 |
| 27 Total | 13,878,975 | 13,700,366 | 1,110,318 |

Table - statistics

Overview of some balance sheet items and annual results from 2014 to 2024

(in thousand CHF)

| | Commitments to customers in the form of savings and investments | Other com- mitments to customers | Cash bonds | Amounts due from customers | Mortgage loans | Profit for the year | General legal reserve | Payment to the State of Fribourg | Payment to municipal- ities and parishes | Balance Sheet sum |
|------|--|--|------------|-------------------------------|-------------------|------------------------|--------------------------|--|---|-------------------|
| 2014 | 6,017,496 | 5,584,111 | 230,746 | 3,153,753 | 12,801,440 | 120,172 | 911,000 | 53,000 | 8,800 | 18,790,108 |
| 2015 | 6,048,407 | 6,165,552 | 248,410 | 3,068,517 | 13,433,871 | 122,690 | 988,000 | 55,000 | 9,000 | 20,623,237 |
| 2016 | 6,193,006 | 6,203,723 | 231,070 | 3,000,335 | 14,123,667 | 123,687 | 1,066,000 | 55,800 | 9,250 | 21,560,833 |
| 2017 | 6,487,431 | 6,489,395 | 213,147 | 2,912,767 | 14,666,367 | 126,365 | 1,144,000 | 57,224 | 9,533 | 21,996,450 |
| 2018 | 6,868,944 | 6,944,332 | 224,576 | 3,081,746 | 15,427,864 | 128,765 | 1,224,000 | 58,990 | 9,964 | 22,926,714 |
| 2019 | 7,313,619 | 6,866,847 | 264,550 | 3,121,864 | 16,242,304 | 131,611 | 1,305,000 | 60,033 | 10,034 | 24,639,422 |
| 2020 | 8,074,448 | 7,576,730 | 295,970 | 3,187,449 | 17,045,531 | 133,344 | 1,388,000 | 66,353 | 3,590 | 26,714,326 |
| 2021 | 8,367,783 | 8,161,689 | 299,226 | 3,046,747 | 17,704,392 | 135,089 | 1,459,000 | 59,134 | 3,129 | 28,034,820 |
| 2022 | 8,582,650 | 7,210,705 | 293,563 | 3,248,436 | 18,321,239 | 141,146 | 1,539,000 | 61,238 | 3,366 | 27,324,676 |
| 2023 | 8,081,104 | 8,067,670 | 358,314 | 3,675,499 | 18,999,045 | 161,496 | 1,623,000 | 80,764 | 4,998 | 27,960,449 |
| 2024 | 8,199,943 | 8,354,884 | 428,509 | 3,677,813 | 19,832,216 | 163,675 | 1,710,000 | 103,278 | 4,589 | 28,700,190 |

Board of Directors Appendix

Professional career

Other activities



Alex Geissbühler is a qualified lawyer. After working in the Legal and Compliance department of the Cantonal Bank of Berne, he handled various responsibilities as a senior partner at KPMG AG and Capco. He is a founding member and partner of Geissbühler Weber & Partner AG. Alex Geissbühler is Chairman of the Foundation Board of the Banque Cantonale de Fribourg Foundation and Chairman of the BCF Compensation and Nomination Committee.

Vice-Chairman of the Board of Directors of the Chamber of Commerce and Industry of the Canton of Fribourg; Director of the DAS Compliance Management course at the University of Lucerne; member of the Board of the Foundation of the University of Fribourg; member of the Board of the Football is more foundation.



Urs Peter Gauch has a degree in economics and has completed courses at the Swiss Banking School. He also completed the Advanced Management Program (AMP) at Harvard Business School in Boston and a Breakthrough Program for Senior Executives at IMD Business School in Lausanne. After starting his career at Banque Populaire Suisse in New York, he led various departments at Credit Suisse beginning in 1995 and was a member of the Executive Board of the Raiffeisen Group, responsible for commercial clients and branches, thereby acquiring key competencies in the banking sector. Urs Peter Gauch is a member of the Audit and Risk Committee and of the Pension Fund committee of the Banque Cantonale de Fribourg, and member of the Foundation Board of the Banque Cantonale de Fribourg Foundation.

Chairman of the Board of Directors of Metalcolor AG. Member of the Board of Directors of HRS AG, Catisa SA as well as various other mandates.



Dominique Jordan Perrin is an economist and holds a PhD in political economics from the University of Fribourg. Between 1999 and 2008, she held various positions at the Swiss Confederation, in the DEFR, and in the FDFA, including a post as Embassy Counselor in Hanoi, Vietnam. Currently head of the OECD & G20 sector at the SECO, she has recognised expertise in international economics. Dominique Jordan Perrin is a member of the Foundation Board and Chairwoman of the Executive Committee of the Banque Cantonale de Fribourg Foundation, a member of the Pension Fund Committee of the Banque Cantonale de Fribourg and of the Compensation and Nomination Committee.

Member of the Board of the Intercantonal Service intercantonal d'entretien du réseau routier Genève/Vaud/Fribourg (SIERA); Chairwoman of the SIERA Audit and Risk Committee.



Thomas Bachmann is a lawyer and holds an MAS in Taxation/LL.M. from the Kalaidos Fachhochschule Schweiz. He has held the position of chief clerk in the Seebezirk. In 1999, he joined the fiduciary company Fiduconsult as a lawyer, where he was director and head of the legal and tax department from 2014. Since October 2022, he has been Head of Tax & Legal at the fiduciary company CORE Partner AG. Since January 2023, he has been a partner at CORE Partner AG. Thomas Bachmann is Vice-Chairman of the Foundation Board of the Banque Cantonale de Fribourg Foundation and member of the Audit and Risk Committee of the Banque Cantonale de Fribourg.

Chairman of the Board of Directors of EdgEvooq Holding SA and Evooq SA in Fribourg; member of the Board of the BAY Foundation.

Professional career



Yves Riedo is a certified public accountant. He held various positions in fiduciary companies before founding axalta Fiduciaire SA and its affiliated companies. Yves Riedo is Chairman of the Audit and Risk Committee of the Banque Cantonale de Fribourg and member of the Foundation Board of the Banque Cantonale de Fribourg Foundation.

Other activities

Chairman of the Boards of Directors of axalta Fiduciaire SA and its group companies, as well as of various SMEs.



Paul Such is a systems and network security engineer. After working as a security engineer in various service companies between 1999 and 2002, he founded the company SCRT SA, which he managed until 2017. He then created Hacknowledge SA in 2016, a company he has been managing since then. He is also involved in several cybersecurity training courses at the HEIG-VD (Yverdon), the HES-SO Valais-Wallis, the Swiss Federal Institute of Technology in Lausanne (EPFL) and the University of Geneva. Paul Such is a member of the Foundation Board of the Banque Cantonale de Fribourg Foundation, of the Pension Fund Committee of the Banque Cantonale de Fribourg and of the Compensation and Nomination Committee.

Member of the organising committee of several cybersecurity conferences, including Blackalps in Yverdon and Global Security Days in Paris. Founder of Insomnihack. ISO 27001 Lead Auditor and project management professional since 2011. Member of the Board of Directors of EdgEvooq Holding SA and Evooq SA in Fribourg.



Jean-Pierre Siggen holds a law degree and a degree in political economics from the University of Lausanne. Former vice-director of the Swiss Union of Arts and Trades (USAM), then advisor for economic and social issues to Federal Councillor Flavio Cotti and for Federal Council affairs to Federal Councillor Joseph Deiss, he headed the Employers' Union of the Canton of Fribourg and was deputy secretary general of the Federation of French-Speaking Companies. A member of the Cantonal Parliament of the Canton of Fribourg, he was elected to the Cantonal Council in 2013 and currently heads the Finance Department. He represents the Canton of Fribourg on the Board of Directors. Jean-Pierre Siggen is a member of the Foundation Board of the Banque Cantonale de Fribourg Foundation.

As a Cantonal Councillor, he is Chairman of the Committee of the State Personnel Pension Fund and a member of the Confederation of Cantonal Finance Directors, the Latin Conference of Finance Directors and vice-president of the Latin Conference of Digital Directors.

Executive Management Appendix

Professional career

Other activities



Daniel Wenger is a business economist (ESCEA). He has been Chairman of the Executive Board of the Banque Cantonale de Fribourg since January 2021, and previously held several management positions at Credit Suisse, particularly in the management of subsidiaries in Europe. From Zurich to New York, via Luxembourg, Gibraltar and London, he has gained extensive experience in the financial services sector. Daniel Wenger is also Chairman of the committee of the staff pension fund of the Banque Cantonale de Fribourg, and a member of the Executive Committee of the BCF Foundation.

Member of the Board of Directors of the Union of Swiss Cantonal Banks. Vice-chairman of the Board of Directors of Investissements Fonciers SA. Member of the Board of Capital Risque Fribourg SA



A lawyer by training, **Christophe Mettler** was legal counsel at UBS SA in Geneva and Zurich from 1999 to 2005. He was head of legal, risk and compliance at Crédit Agricole Financement (Suisse) SA from 2006 to 2014, and served as deputy managing director until 2015. An associate lawyer in a law firm in Lausanne specialized in banking, real estate and economic crime between 2015 and 2017, he joined BCF in 2016 as Head of Compliance and Legal. A member of the Executive Board since 1 April 2021, Christophe Mettler is responsible for the Legal, Risk and Compliance division.

Member of the Board of Directors of BCF SICAV since 2020 and Chairman of the Board of Directors since 2023.



Anne Maillard holds a degree in economics from the University of St. Gallen and has also completed a leadership training course at Stanford University. After holding various positions at the Swiss Bank Corporation and the Chamber of Commerce and Industry of the Canton of Fribourg, she joined the Banque Cantonale de Fribourg in 1998. A member of the Executive Board since 1 January 2017, Anne Maillard heads the Products and Services division. Ms Maillard decided to leave the Bank in December 2024.

She is a member of the Foundation Board of the Espace Jean Tinguely - Niki de Saint Phalle, a member of the Foundation Board for the renovation and conservation of the Couvent des Cordeliers, and a member of the Management Commission of the Cantonal Cultural Fund. Chairwoman of the Advisory Committee of the Museum of Art and History of Fribourg.



Luc Jacquat has a federal diploma in banking economics and has held various positions at BCF since 1982. He has been responsible for risk management, ALM management, financial planning and management. As CFO and member of the Executive Board since 1 January 2023, Luc Jacquat is in charge of the Finance Division.

He is a member of the Board of the BCF Vested Benefits Foundation, a member of the Board of the BCF Savings 3 Pension Fund, a member of the committee of the Federation of Family Allowances Offices of Fribourg, a member of the committee of the Family Allowance Office (CAFAB), a member of the Swiss Association of Foreign Exchange Dealers (ACI Suisse), and the auditor of the Fribourg Chamber of Real Estate (CFI).

Professional career



Cédric Yerly is an HES business economist. He held various positions at Credit Suisse from 1996 to 2000. He joined BCF in 2000 as a credit advisor. He has been a member of the Executive Board since 1 January 2017 and heads the Private Clients division. Cédric Yerly is a member of the Board of Directors of BCF SICAV.

Other activities

He is a member of the Société Coopérative du Comptoir Gruérien. He is also a member of the Committee of the Fribourg Tourism Union (UFT) and Chairman of its financial committee. Member of the Foundation Board of the Château de Gruyères and Chairman of its financial committee.



Laurent Wicky has a federal diploma in banking economics and began his career in 1986 at the Banque Populaire Suisse. He joined BCF in 1990 and, after a short time in various branches, began his career in the credit business in 1993. After rising through the ranks, he joined the Executive Board on 1 March 2023 and heads the Corporate Clients division.

Member of the Fribourg Tourism Committee; member of the Committee of the Fribourg Chamber of Real Estate.

Impressum

Concept and realisation
RMG Design, Fribourg

Photos

Keren Bisaz, Mirages Photography, Fribourg

Note: This document is translated from its original and official French version.

© 2025 BCF all rights reserved.



Banque Cantonale
de Fribourg

Bd de Pérolles 1
Post Office Box
1701 Fribourg
Switzerland

+41 (0)848 223 223
www.bcf.ch